

Published by registration no. (00127) မြန်မာ့အသံအဖွဲ့အစည်း

Business and Lifestyle information magazine in Myanmar

MYANMAR *plus* JAPON

5

2015 MAY

TAKE
FREE

Special Feature

Forgotten secluded beauty Travel into Deep Inle

Top Interview

The Union Minister of
Commerce of Myanmar

U Win Myint

Special Feature II

**Myanmar Snacks -
Sweet Life of Yangon**

Special

**YANGON CITY
MAPS**

Sharp eyes on energy conservation



The Fuji Xerox ApeosPort-V series combines energy-saving efficiency with outstanding user convenience. Our proprietary Smart Energy Management technology monitors the control panel, controller, scanner, and printer components, reducing electricity consumption and CO² emissions by delivering power only to the components that actually need it. What's more, eco-friendly performance is further enhanced by an improved IH fuser that draws no power in standby mode, yet is ready to print in just 3.1 seconds*. Wait time is also reduced by Smart WelcomEyes, a unique dual sensor system that detects your approach and activates the control panel in just 2 seconds.

The Fuji Xerox ApeosPort-V series — it's a no-compromise solution for maximum energy savings and user convenience.

*In copying mode, on ApeosPort-V C3375/C2275

Revolutionizing the way offices work

ApeosPort-V C7775 / C6675 / C5575 / C4475 / C3375 / C2275

Fuji Xerox provides Global Quality Support locally in Myanmar.

Fuji Xerox has established its business operations in Myanmar to serve our customers better here.

Having set up our local presence, we have Fuji Xerox direct sales representatives & specialized engineers to provide prompt support and quality service in offering our products and solutions to meet your business needs.

For more information, please contact a Fuji Xerox sales representative now.

Shinichi Kimura
木村伸一

Sales & Marketing Manager (Yangon Resident)

E-mail shinichi.kimura@mnr.fujixerox.com

Mobile 0931-659-813 (Weekdays 9 a.m. – 5 p.m.)



Kazuhiko Kiji
木地和彦

Global Account Sales (Yangon Resident)

E-mail kazuhiko.kiji@mnr.fujixerox.com

Mobile 0925-443-2319 (Weekdays 9 a.m. – 5 p.m.)



日本語でもお気軽にご連絡ください。

Fuji Xerox Co., Ltd. www.fujixerox.co.jp/

Xerox, Xerox and Design, as well as Fuji Xerox and Design are registered trademarks or trademarks of Xerox Corporation in Japan and/or other countries and are used under license.

Fuji Xerox Asia Pacific Pte Ltd (Myanmar Branch) www.fxap.com.sg/

#517, 5th Floor, Hledan Center, Corner of Pyay Road & Hledan Road, Kamaryut Township, Yangon, Union of Myanmar TEL 01-2305-624/625

FUJI XEROX



Giving electric light to the world...

...100 Thousand Solar Lanterns Project



In the world, around 1.3 billion people lack electricity – this threatens their health and livelihoods. A little bit of light can go a long way in resolving big social challenges. In 2018, Panasonic will be 100 years old. By the end of FY 2018, Panasonic will donate 100,000 solar lanterns to areas which have no electricity.



Giving light to areas with no electricity

Panasonic is contributing to the resolution of social challenges in developing and emerging countries as part of its 100 year anniversary in 2018 by donating 100,000 solar lanterns.

The donation recipients are NGOs and international institutions active in areas without electricity in Southeast Asia, South Asia, and Sub-Saharan Africa.

Currently, there are around 1.3 billion people in the world living without electricity, and most of them are in developing countries. In areas without electricity, homes typically light their rooms with kerosene lamps. But kerosene lamps emit fumes which are bad for health and don't produce

enough light to be active at night. Lack of electric lights causes problems for health, education, and the economy.

40,000 solar lanterns donated throughout the world already Over 7,000 in Myanmar

Our project to distribute solar lanterns to areas without electricity across the world started in 2012, and we have donated over 40,000 units to date. Myanmar's electricity coverage rate is only 32% making it far behind other ASEAN countries.

Myanmar is one of Panasonic's priority countries and we have

donated 7,064 units up to 2014. With 2014 being the "60th Anniversary of the Establishment of Diplomatic Relations between Myanmar and Japan", the donation of solar lanterns was recognized by the Embassy of Japan in Myanmar as a commemoration event. By working with eight organizations, a total of 2,004 lanterns were donated to schools, monasteries, and midwives.

From 2015 onwards, we will continue to support solving social problems in Myanmar's areas without electricity, and will continue to advance this project.

Your understanding on and support to this project would be very much appreciated.

In November 2014, Panasonic donated solar lanterns to eight organizations.

No.	Organization	Usage of Solar Lanterns	region
1	Myanmar Red Cross Society (MRCS)	Used for community safer and resilience project and community development project Used at disaster evacuation camps	Chin, Mon, Kayin, Kayah, Shan
2	Japan Heart (JH)	Used at the "Dream Train," a children's nursing home	Yangon
3	Greater Mekong Initiative (GMI)	Used at temple schools for students to study	Yangon, Mandalay
4	Saetanar	Used at schools for students to study	Shan
5	Certified NPO Binumero no kai	Used at private school and primary school	Yangon
6	Peace Winds Japan (PWJ)	Used for various purposes including education, work, etc.	Kayin
7	Save the Children Japan (SCJ)	Used by midwives	Kachin, Sagaing, Magwe, Bago, Kayin, Ayeyarwady
8	Association for Rengain Tanjoji International Cooperation (ARTIC)	Used for education of children	Ayeyarwady

Panasonic is looking for partners!!

Panasonic is looking for partners to help transport and sell its lanterns to areas without electricity.

Panasonic



Solar Lantern



Eneloop solar storage

Please contact us...

Panasonic Asia Pacific Pte. Ltd. (Myanmar Branch)
TEL: 01-860-4657
G-15, Tower D, Pearl Condominium, Kabar Aye Pagoda Road, Bahan Township, Yangon
Contact: Maeda

MYANMAR JAPON plus

ISSUE 9 May 2015

Contents

NEWS

6 | Business News Digest

FEATURES

8 | Special Feature I Forgotten secluded beauty Travel into Deep Inle

10 | Top Interview

U Win Myint
The Union Minister of Commerce of Myanmar

12 | Special Feature II Myanmar Snacks - Sweet Life of Yangon

SPECIAL MAPS

14 | Yangon City Maps

20 | Hot News

Useful Information

23 | Food, Hotels, Entertainment, Shopping

Myanmar Japon Plus Magazine

No(70), Natmauk Lane Twe (1),
Bahan Township, Yangon. 01-8604301(Ext.101)
Registration No. 000127

Publisher - MIRC Co.,Ltd. Yutaka Nagasugi
Editor in Chief - Phone Myint Min
Editors - Yuki Kitazumi ,Kyaw Kyaw Thant,
Ei Ei Chaw, Mayumi Mihara,
Chaw Su Win Maung, Sithu Aung,
Thinzar Wint Htel, Thandar Lin

MEDIA DATA

First Issue	September 1st, 2014.
Appearance	A 4, saddle stitch, 28 pages, Full color
Circulation	18,000 Copies
Price	Free of charge
Printing	Aung Thein Thann Printing Station



This Month Cover: Tsurugaoka Hachimangu

Tsurugaoka Hachimangū is the most important Shinto shrine in the city of Kamakura, Kanagawa Region, Japan. It was dedicated to Hachiman, the god of war and founded by Minamoto Yoriyoshi in 1063, and was moved to its current site in 1180 by Minamoto Yoritomo, the founder and first Shogun of the Kamakura government.

Tsurugaoka Hachimangu was for most of its history not only a Hachiman shrine, but also a Tendai Buddhist temple. At the left of its great stone stairway stood a 1000-year old ginkgo tree, which was uprooted by a storm in the early hours of March 10, 2010. The shrine is designated an Important Cultural Property. In the present day, Kamakura is famous for its many historical sites and places. Tsurugaoka Hachimangu is still located at the center of Kamakura, attracting respect and faith.

MYANMAR  JAPON  plus

DISTRIBUTION

Available at over 100 outlets including City Mart, Ocean, Marketplace in Yangon, Naypyidaw, Mandalay; Yangon International Airport; Embassy of Japan in Myanmar; and all major Hotels and Restaurants in Yangon.

Myanmar Japon business matching service

Is your company interested to team up with Japanese and foreign companies?

Myanmar Japon provides you with expertise on overseas sales channels development, production management, business operations, and marketing strategy formulation. We can also introduce you to ideal partners and support the establishment of joint ventures.

MYANMAR JAPON Co.,Ltd.

Contact: Nagasugi(Mr)/Ei Ei Chaw(Ms)

09-31019178

info@myanmarjapon.com



Business News Digest



Creation of New JCCM Mitsubishi's Mr. Ido appointed president

On April 1, the Japanese Chamber of Commerce and Industry Yangon held its general meeting and decided to change its name to the Japan Chamber of Commerce and Industry Myanmar. With company membership growing, the organization plans to expand its activities outside of Yangon. The Chamber clarified the roles of members and amended the charter to implement structural reforms to match contemporary needs.

At the meeting, 16 directors were sworn in. Then at the directors meeting, Mr. Ido, the Chief Representative of Mitsubishi Myanmar, was elected as President. In Mr. Ido's greetings, he emphasized that 2015 would be an important year for Myanmar and Japanese companies in Myanmar. He announced his vision to "transform the Chamber into a pro-active organization".

JCCY member companies have increased rapidly with the rise in Japanese companies entering

Myanmar following its democratic transition. While in 2011, the number of member companies was about 50, it is now 221.

Wacoal, Acecook set up factories in Thilawa

With the development of Thilawa SEZ, the number of companies announcing plans to set up factories in the zone is rising. Wacoal Holdings will produce underwear while Acecook will start local production of instant noodles. Sumitomo will provide the thermal power plant to power the facilities and the presence of Japanese companies in the site's infrastructure development can be increasingly felt.

On March 19, Wacoal HD announced the establishment of Myanmar Wacoal and plans to set up a Wacoal factory. The factory will start operations in 2016 and plans to produce 2 million bras by 2020.

On March 18, Acecook, which is selling instant noodles in Myanmar, set up Acecook Myanmar. They plan to start factory operations in the zone by 2017.

Regarding the thermal power supply to the zone, Sumitomo announced that it had received orders for two units (50MW). The gas turbines will be supplied by Mitsubishi Hitachi Power Systems with operations to start in 2016. Sumitomo will also set up the distribution network forming "Thilawa Global Logistics". It will establish a distribution center, and handle the transport of materials and products for companies operating in the zone.

Selling Japan's health and longevity JETRO organizes exhibition with 90 companies

During March 21-23, JETRO hosted a "Japan Healthful Lifestyle Exhibition" with displays for various areas of health. It was the first time for JETRO to host such an exhibition in Myanmar. Around 90 companies participated selling products and services.

In addition to health equipment companies like Omron and Tanita, there were vegetable juice producers like Kagome and Itoen. Toto displayed its wash room products promoting comfortable living. Major Japanese electronics companies also participated. Sharp displayed its cooking equipment such as Mixer. Panasonic took up a lot of space to promote its household health devices. Sony focused on sports.





Myanmar's first international debit card JCB targets 2 million cards

On March 11, JCB International (JCBI) formally contracted and announced a tie up with Myanmar's national settlements network MPU to issue a co-branded Myanmar debit card. It would be a joint card and the first time that an MPU card could be used outside Myanmar. The venture is negotiating with MPU's participating banks. By earliest in August, the first co-branded card will be issued.

At the signing ceremony, JCBI's Vice President, Mr. Imada announced plans to issue 2 million cards by 2020. JCBI expects 6 million cards to be issued and is targeting 30-40% market share.



Panasonic opens large scale show room

On March 24, Panasonic opened a large scale show room on the Ground floor of the Pearl Condo in Yangon. The show room offers an integrated display of Panasonic products and includes a service center. Panasonic plans to open a similar facility in Mandalay in April.

In addition to consumer products, the show room displays industrial products. Next to the entrance, the VIERA TV is positioned to impress. The facility is set up to feel like a real kitchen or home. Visitors can also try

the beauty appliances which are popular in Japan.

The representative of Panasonic Asia Pacific Myanmar Branch, Mr. Maeda, emphasized they were seeking to deeply ingrain the Japanese "hospitality and customer service" spirit.



Fuji Film starts selling X-Series in Myanmar

On March 26, Fuji Film started selling its main camera, the X-Series, in Myanmar. The company is focused on its popular X-T1, bringing its high quality mirrorless interchangeable lens technology to Myanmar to develop a new market. Across Asia, the company is targeting high end sales primarily with its X-Series.

At the announcement event, Fuji explained that the camera market was shifting from compact digital cameras and single-lens reflex to mirrorless interchangeable lens technology. They explained that the technology was light and quiet. Then they opened a photo exhibition inviting Myanmar photographers to use the mirrorless interchangeable lens technology, which has not yet caught on in Myanmar.

Improving postal services with Japanese help



On March 19, MPT and Japan Post jointly held an information session for Japanese companies to explain

how Myanmar was working with Japan to dramatically improve Myanmar's postal services.

Japan streamlined the mail distribution procedure with rationalized steps introducing the "Unified" approach. Mail that used to take 4-5 days to deliver now only takes 1.6 days. Based on undercover research in February 2015, the arrival rate for mail between Yangon, Naypyidaw, and Mandalay improved to 99.3% from 87.8% in January 2014.

At the Yangon central post office, from March 1 there is a service counter for Japanese companies which can handle service in English. Staff well-experienced with Japanese business conditions offer polite service and respond to telephone enquiries.

The Postal Secretary U Kam Aung attended the session and said "Our service has dramatically improved thanks to Japanese cooperation, so we encourage Japanese companies to try it."

Freshness Burger closes down 1st outlet The Japanese community shocked and sad



In March, the Freshness Burger restaurant which had opened in August last year in Myanmar Culture Valley, was shut down. It had been closely watched as it was a major Japanese food chain expanding into Myanmar, and the Japanese community was shocked and sad to see it close.

In Myanmar where many refrain from eating beef, it seems the store could not attract enough customers to cover its expensive rent. Going forward, the group will focus on its 2nd outlet in the downtown area near PARKROYAL with new menu such as fried chicken. The Freshness head office in Tokyo stated that it will rebuild company brand.

Special Feature 1

Forgotten secluded beauty

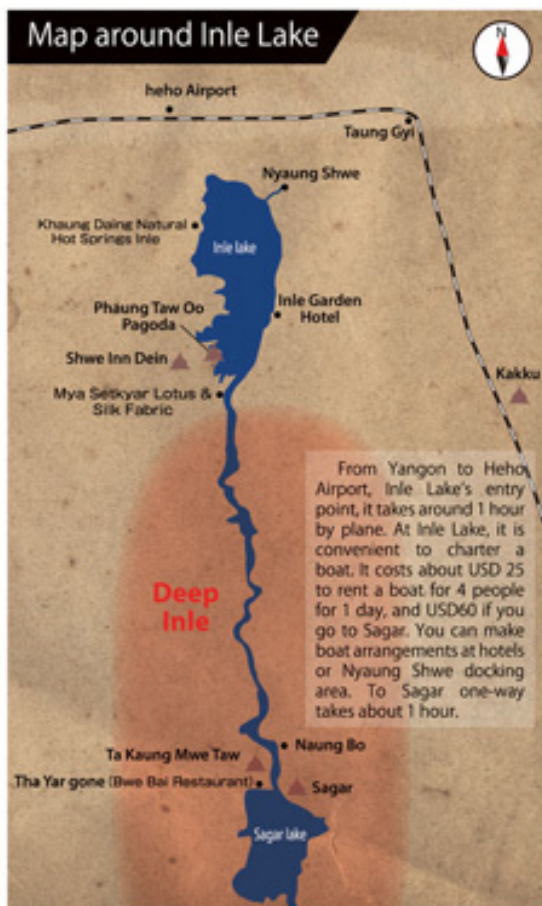
Travel into Deep Inle

Inle Lake in Shan State is a top resort destination for both overseas and domestic travelers. But not many people, even local Myanmar people, know that in the southern backwaters of Inle there are ruins nestled in secluded areas. Until the 21 century, it was forbidden for foreigners to enter the area, and it is typically not mentioned in guidebooks. We report on Deep Inle and its beautiful untouched scenery.



Sagar ruins – where time stands still

Map around Inle Lake



We travel by boat from Inle Lake southwards and down the river to enter Deep Inle. After only 30 minutes of travel from Inle Lake we leave behind the hustle and bustle of the resort area and enter into a peaceful rural landscape. As the boat cuts through the reeds, we see villages of people living on stilts above the water and many pagodas and temples. Children are playing in the water and buffalo swim across the river. Occasionally, we encounter an Inthar leg-rowing fisherman.



After another 1.5 hours, we see the Kakku Mwe Taw temple on our right side. According to the villagers, this ancient temple is around 1200 years old and features 236 sharp Shan-style pike pagodas lined along the river. From the year 2000, foreigners were forbidden to enter, and with cooperating from Singapore and Malaysia, the site is gradually being restored to its former majesty.

We go 15 minutes by boat from there and see the Sagar ruins reflected in the dark waters. Most of the 109 pagodas have not been repaired and are untouched. The temple is along the river bank so during rainy season when the waters rise, the area resembles a magical forest of Pagoda in the water.

One of the monks who looks after the temple explains that during Burma calendar year 841 (Western 1479-1480), the temple was built by Shan tribes who came in from Thailand. At the time, Shan tribes consolidated control over the region and it was the flourishing center of commerce and culture.

Walking amongst the ruins, we see crumbling stupas with traces of ornamentation and Buddha sculptures. The stupas are fused with linden trees giving a feeling of eternity. Ruins are inside the villages and used as part of village life.



During the journey, we can get off and visit the surrounding villages. On the north side of Sagar is Naung Bo village which has pottery workshops. Three generations of female workers are making what looks like large turtles on the potter's wheel.

At this point, gently flowing with the passage of time, we feel the life and breathing of the village. Surrounded by a feeling of nostalgia, we board the rocking boat heading home.

Places to visit around Inle Lake

Many other places to see

Meet many ethnic tribes !



► The symbol of Inle, the foot paddling Inthar tribe.

◀ In Insein, you will encounter Pao villagers carrying straw to feed their animals.



◀ The Kayang (Padaung), with their neck rings, come from Kayar State.



Kakku

At the back of the bad road appears the Kakku site, with its overwhelming 2,478 pagodas. Walking between the pagodas feels like a labyrinth. It is necessary to hire a Pao tribesperson from the Taunggyi Administrative Office to guide you. From Taunggyi it is about 1 hour by car.

Within the dense forest are ancient pagodas. There are 1,054 pagodas and most of them have not been repaired. The view from Shwe Insein pagoda is magnificent. It is about 30 minutes from Inle Lake upriver by boat. Along the path are many ethnic tribes selling souvenirs.



Insein

Deep Inle farmer restaurant



A restaurant located on the south side of Ta Kaung-Mwe Taw temple. You can taste juicy fruit and vegetables from the village. A dish of fish and tomato salad costs Ks6500-9000. Nearby is a distillery where you can see rice liquor being made.

Bwe Bai Restaurant
 📍 Tha Yar Gone Village Inle Lake ☎ 09-4957-8408

Inle Hot Springs



At Inle, surprisingly you can find a sauna. Soaking in an outdoor hot spring while looking across idyllic scenes of farmland is a moment of bliss. There is also a Jacuzzi for foreigners (USD10) with a bar alongside.

Khaung Daing Natural Hot Springs Inle
 📍 Naung Wun Village, Khaung Daing
 ☎ 09-4936-4876 🕒 5:00-18:00

Lotus Textile Workshop



An old workshop making textiles from lotus stem fibers. It is on the lake, so you visit by boat. The lotus scarf costs USD100 and keeps you cool in summer and warm in winter.

Mya Setkyar Lotus & Silk Fabric
 📍 Inpaw Khone, Inley ☎ 09-5211-662

JTB polestar recommendations !



Golden Kite Restaurant

A tidy Insein restaurant providing local Inle food and Western food. There are also a series of shops along Inle lakeside. Their specialties are grilled fish and dessert crepes. A course is Ks 6,500-8,000.

📍 Insein Village, Nyaung Shwe Township
 ☎ 09-4938-5448 🕒 8:00-17:00



Inle Garden Hotel

A cottage type hotel on the east shore of Inle Lake. It just opened in October 2014. If you look across the lake from the terrace at night, all you hear is the quiet sound of insects. There is a specialized dock. One room costs US\$180.

📍 Inyin Gone Village, Nyaung Shwe Township
 ☎ 09-2590-11773

Recommended 3-day tour of Inle Lake and Deep Inle

D A Y 1	<ul style="list-style-type: none"> • Fly from Yangon to Heho • Inle sightseeing (aquatic plantation, floating island, floating houses, Phaung Daw Oo temple) • Stay at hotel in Inle
D A Y 2	<ul style="list-style-type: none"> • Depart early morning for Southern Inle by boat • Visit sites of Ta Kaung-Mwe Taw, Sagar • Visit ethnic minority village • Return by boat to Inle and stay in hotel
D A Y 3	<ul style="list-style-type: none"> • Transfer via Taunggyi to Kakku • Sightseeing in Kakku • Fly back to Yangon from Heho

Coverage cooperation: JTB Polestar ☎ 01-382528

**Top
Interview**

Teachings of a Myanmar Expert

In this section, MYANMAR JAPON's Mr. Nagasugi interviews Myanmar's leading personalities to uncover the realities of "Today's Myanmar".

Union Minister of
Commerce of Myanmar
U Win Myint

This month's theme:

Myanmar's economy is at a crossroads – what is your outlook?



Union Minister of Commerce of Myanmar

U Win Myint was born in 1954, Sagaing Division in Myanmar. He had been MP until he was appointed as the Union Minister of Commerce of Myanmar in 2011. He is famous for his leadership in business and was a chairman of the Union of Myanmar Federation of Chambers of Commerce and Industry (UMFCCI) from 1999 to 2011. He is also owner of an energy related company and the Zeyar Shwe Myay Football Club.

He knows Japan, is visiting Professor of Musashino University and received the Honorary Doctoral Degree from Nishogakusha University, Japan.

Myanmar's economy has problems, but the impact is not huge

Nagasugi Thank you for taking time out of your busy schedule as a public servant to meet with us. As a publisher of Japanese and English journals, I gather a lot of information and nowadays it seems that Japanese companies are attracting significant attention in Myanmar. I think that Japanese corporate investment into Myanmar will expand this year, next year, and beyond...

Win Under the new system since 2011, there has been a lot of investment from overseas, and it would not be an exaggeration to say that Japan is the largest. Also, a key driver of social development is the media. Until recently, Myanmar's media was undeveloped, but after 2 years of liberalization, the media has grown stronger. So with these developments, it is an honor to be interviewed by MYANMAR JAPON.

Nagasugi We greatly appreciate your kind words. Now let's move to some questions. While foreign corporate investment into Myanmar is driving remarkable growth, it is also creating various issues such as a growing trade deficit from imbalanced imports, raising inflation, and others. What are your views on the current state of the Myanmar economy?

Win As you indicated, Foreign Direct Investment (FDI) is increasing. Over the past 4 years, FDI reached US\$17b. In 2014, it was US\$7b, the highest ever.

But clearly the current Myanmar economy has areas of instability which the IMF points out. The IMF raises several issues such as the fighting in Lauk kaing in Northern Shan State, labor boycotts, and student demonstrations. It also predicts that Myanmar will face rising inflation and decelerating growth. But most of these problems have already been tackled, and I don't think these concerns will have a big impact on economic growth.

Myanmar people trust Japanese products

Nagasugi What do you think of massive trade imbalances? Some think that trade deficits can't be avoided because imports are a necessary part of the process of development, and that a temporary expansion of trade deficits is inevitable.

Win I agree with that. I was Chairman of UFMCCI for 12 years and during that time I often visited Japan on trade missions. When I became the Minister, I visited Tokyo and Kyoto. At that time I met with over 800 Japanese companies. We can learn from the Japanese experiences to solve issues in Myanmar. Myanmar has just 4 years in its democratic transition, and the government is still young and there might be some problems.

Nagasugi For Japanese companies, what sectors have good investment prospects? Also, what advantages do Japanese companies have?

Win For sectors, I recommend transportation, manufacturing, and construction. Also, hotels and services sectors such as finance and insurance are attractive. Agriculture is good. I think Japanese product quality is the best in the world. Almost 90 % of motor vehicles imported these days are Japanese-made. Many cameras and electronic goods are being imported. Many Myanmar people believe they can trust Japanese products.

Key department for economic reform

The Ministry of Commerce is responsible for overseeing trade and promoting exports. It is playing a key role in driving the Myanmar government's economic reforms. For a long time the ministry was controlled by military personnel, but in 2011 a businessman and politician, U Win Myint, was appointed to the top position. With foreign investors calling for

transparency on trading procedures and clarity on trade related

law, the Ministry is busy preparing English and Myanmar language regulations. Also, with the trade deficit rising, promotion of Myanmar's exports is becoming an important issue.





At the Ministry of Commerce Office in Naypyidaw

Nagasugi Agriculture is an extremely important sector for Myanmar. In agriculture, can you give examples of kind of investment which is necessary?

Win Myanmar has a lot of land. But it lacks technology. If you add Japanese technology, then Myanmar's agriculture sector will develop more. As a successful example, let's look at sesame. In Magwe, they are cultivating sesame under Japanese technological guidance and exporting it to Japan. As a result, they are able to extract very high quality sesame. I also think vegetables and fruits have potential. The climate in Shan State is similar to Japan so we should be able to grow products which are in Japan. There are examples of using Japanese technology for dry processing of cabbages grown in Shan for export to Japan. In Nay Pyi Taw, a vegetable dehydration factory has been set up. Also, a major Japanese company has started conducting research to develop agricultural areas in Shan State and Mandalay Region.

Thilawa SEZ is progressing

Nagasugi Additionally, Japan is supporting the development of Thilawa SEZ, which is a project attracting a lot of attention. While expectations are high, there are concerns over the delayed construction.

Win Thilawa is the most advanced of the three SEZs, which also include Kyauk Phyu and Dawei. We are building out the infrastructure to promote investment. Imported capital goods can enjoy tax exemption which lowers manufacturing costs. We will apply international

rules to ensure business runs smoothly.

For the Thilawa SEZ, Vice President U Nyan Tun has assigned a special committee to drive the project forward. If there is a problem, then the Vice President calls people to make things resolved. While certainly there are problems, we are doing our best to resolve them, so you need not to worry.

"Economic development is my responsibility, so please come talk with me anytime"

Nagasugi Recently, there have been worker strikes at factories. While there are benefits to rising wages, you cannot ignore the negative effects strikes have on management.

Win The Ministry of Labor is leading and making efforts to resolve these problems. We are setting minimum wage into law. We are building low income housing. We are gradually fixing these problems.

Nagasugi I also believe the issues will be resolved. Japan was in a similar situation 40-50 years ago, and overcame such problems.

Win Yes, I agree with that. Myanmar is a young country with only 4 years of democracy. In the near future, we can solve these problems.

Transforming politics and the economy at the same time

Nagasugi Well, sometimes it feels like the good and bad things that happened in Japan over 40 years are happening in Myanmar over just 4 years.

Win In Myanmar, we are undergoing both political and economic reform, so these types of problems arise. Other countries do not try to reform politics and economics at the same time, rather they reform one first. But Myanmar is doing both at the same time.

Nagasugi Myanmar and Japan have strong bonds historically. Going forward, how do you think both countries should develop their ties further? What is your message to Japanese?

Win At the government level, Japan-Myanmar relations have improved a lot. Myanmar people also really like Japan. I believe the links between both countries will continue to strengthen. We invite Japanese to please come visit Myanmar. For business people, our door is always open so please consult with us anytime.

Nagasugi Are you sure you're ok to say that? You may have many Japanese business people who read MYANMAR JAPON coming to visit you... you'll be very busy!

Win That's fine. It is my responsibility to do everything possible for the development of Myanmar's economy. Please come to talk with me anytime.



CEO, MYANMAR JAPON CO., LTD.

The publisher of the Japanese language magazine MYANMAR JAPON and English language magazine MYANMAR JAPON +PLUS. As a Myanmar-based business journalist, his coverage ranges from business and economics to culture and arts using various sources such as government ministers, public information, and independent reporting. He provides a wide range of business expansion and investment advisory support services for foreign companies in Myanmar including market research, business matching, and company formation. He is President of Yangon Wakyo Kai, Vice President of the Japan Myanmar Friendship Association, and Special Committee Member of the Japan New Business Council Association.

Special Feature 2 Myanmar Snacks

Sweet Life of Yangon

A rich line-up of traditional snacks

Long time ago, before 9-5 office life became the norm in Myanmar; people ate two main meals a day – one in morning time and one in evening time. During the rest of the day, they snacked on sweets to satisfy their hunger pangs

This is the reason Myanmar has so many charming sweets. But if you don't know what they are, it's hard to know where to begin tasting them. Read the following explanation, and if you see a tasty looking sweet, then try it during your next snack time.

Specialty of Patheingyi Har La War

Made from sticky rice and coconuts, it is a sweet that feels like "Jelly". The famous Patheingyi product comes packaged in a cylindrical case, and there are many who cut it into round slices. During dry season it is sold around Yangon, and across the country the type of Ha Lar War sold at temple festivals is almost always brought from Patheingyi.



when eating it is squeezed out of the container and cut into round pieces



stall at festival

Eternal classic sweets

Sa Nwin Ma Kin

Typical of a rice country, these snacks are made of rice powder. They are heavy snacks and do far more than just satisfy a light hunger, they satisfy gourmet tastes. Especially recommended is the red type made with bananas – it will fill your mouth with the rich taste of banana.



Cooling in appearance

Kyaut Kyaw

With multiple layers of translucent colored jelly, it symbolizes pomp and coolness. It is used to decorate tables for celebrations. There are many varieties on display at supermarkets, so it is easy for foreigners to buy.



Bread of Summer Dessert

Shwe Yin Aye

If you translate directly, it means "gold", "heart", and "cool". You prepare it mixing jelly and tapioca in a bowl with coconut syrup, then put it on top of bread. It is customarily eaten at water festival so you will see a lot of it during this time.

A Creamy Texture

Thar Guu Pyin

A sweet made of Tapioca, it is clear and cool, but more simply prepared than Kyaut Kyaw. Coconut shavings are typically used as garnish. It is often served with Sa nwin ma kin.



Order traditional snacks using traditional measuring weights Sales units for snacks



Myanmar has its own traditional measuring units. They are Pake Thar (Viss) (1600g) and kyat thar (16g). These are fundamental units when shopping for food so when you're buying Sa nwin ma kin and Kyaut Kyaw, if you raise one finger to order, you'll usually get 160g, not 100g so be careful.

1 Shwe Chi - furthest back is Har La War, others are Sanwin ma kin. Right side is banana type 2 Kyaut kyaw - flower of the table 3 Hta Nyat - rugged and looking like a rock 4 Shwe Yin Aye - While eating, the bread goes softly 5 Thar Guu Pyin - feels like small transparent pebbles 6 Picture of Ma Gee Yo Lone

Simple traditional snacks

Hta Nyat

At Burmese restaurants after eating the main course, this dessert is often served on lacquerware. In addition to helping digestion, it is rich in vitamins and minerals. It is made from "toddy", the fruit from a tree which looks like coconut. When you visit Mt Popa, there are many tours visiting such sugar mills.

You can't stop eating it

Ma Gee Yo Lone

Candied sweets are generally called "yo" and there are various types like peanut and apricot. Tamarind is especially recommended. Sweet sugar and tamarind sour are matching flavors. No matter how much you eat, it is always a great combination.

Famous shops are here → Popular by local word of mouth

Popular stalls in Chinatown

Fatty Ma

A Street stall with Chinese sweets which you eat on the spot. The lady owner speaks fluent Japanese so even though it's a street stall, it's easy to order and you also receive an explanation of the sweet. You can eat at the tables set up in front.



The subtle sweetness of pumpkins and carrots are delicious in the popular Owe Kwe Gyi



733 Mahabandoola Rd., Lanmataw Tsp.
None 7:00 ~ 22:00 (Daily)



Myay Ni Gone Shwe Yee

A public food area in an alley south of Dagon Center which is famous for delicious snacks. Mont Late Pyar is a red bean paste wrapped in thin dough-like skin and highly recommended.

Mont Late Pyar is Ks800 for a set of 5



27 Mahabawga Rd., Sanchaung Tsp.
01-501165 / 500227 6:00 ~ 18:00 (Daily)
During water festival, only open in the morning, and takes a long holiday after the festival

A secret shop amongst the streets

Daw Tin Nu

A hidden shop which attracts people from afar to buy its sweets. It always only sells 4 or 5 types. For local weddings and Buddhist ceremonies, many people make reserve large orders.



Corner of Baya Thoke Di Rd & Ni Gyaw Rd., Tamwe Tsp.
09-73199689 9:00 ~ 21:00

Upcoming Shows and Exhibitions

※ Exhibition schedule and appointments may change without notice. Listings, postponement, For more information, please check with the organizers and related sites, etc.

View of Table ① Places ② Business ③ Organizer / Contact

Date	Detail
5/14-5/16	Myanmar International Medical & Pharmaceutical Exhibition 2015 ① Tatmadaw Hall ② Medical facilities and services ③ VINEXAD, Vietnam / http://10times.com/
5/15-5/16	Gorgeous Japan 2015 ① Hotel Novotel Yangon Max ② Books, character, cosmetics, apparel, beauty ③ michi / http://michi.co.jp/gorgeousjapan/html/index.html
5/18-5/21	Myanmar Oil & Gas 2015 ① Traders Hotel Yangon ② Oil and gas industry ③ Veas Co. Limited, Vietnam / http://10times.com/
5/26-5/28	Myanmar Urban Development Conference (MUDC) and Inaugural Real Estate Show ① Sule Shangri-La Hotel ② Urban development and real estate services ③ Sphere Exhibits Pte Ltd, Singapore. / http://www.sphereconferences.com/events
5/26-5/27	Myanmar Mobile Services ① Sedona Hotel, Yangon ② Mobile operator service-related ③ Centre for Management Technology, Singapore / http://10times.com/
6/3-6/5	Food & Hotel Myanmar ① Myanmar Event Park ② Hospitality industry and related equipment ③ Bangkok Exhibition Services. / http://10times.com/food-hotel-myanmar
7/22-7/25	Myanmar International Machine Tool and Automation Exhibition ① Myanmar Event Park ② Production machinery, automation equipment, construction-related ③ Chan Chao International / http://10times.com/myanmar-international-machine

Popular Festival in Myanmar and Japan

Month: May

Full Moon Day of Kason (Bo Tree Watering Festival)

According to the Myanmar calendar, Kason (May) is the second and hottest month of hot season. In this month, water in all ponds, lakes and creeks are at their lowest level. In Myanmar, Full Moon Day of Kason is one of the most religious and historically significant days for Buddhist people. It is also known as Vesak Day or Buddha Day in other Buddhist Countries.



Kason full moon day symbolized the four most important days in Gautama Buddha's life time: on this day it was prophesized that he would become the next Buddha, on this day he was born, on this day he achieved Enlightenment (Became the Buddha) under the sacred Bodhi tree, and on this day he entered Parinirvana (Passed Away).

The Bodhi tree closely linked with Lord Buddha so it is highly venerated by the Buddhists. On the Full Moon day of Kason Myanmar Buddhist people celebrate not only water pouring ceremony at the Bodhi tree, but also keeping Sabbath, meditation, offering flowers, light, water and incense to the images of Lord Buddha.

Children's Day Festival (Kodomo no hi)



In Japan, Children's Day or Kodomo no hi is celebrated on May 5. It's also a Japanese National holiday and is a part of the golden week (Serial Holiday). It is a day to celebrate children's personalities, health and happiness.

Before 1948, the day was known as Boy's Day (Tango no Sekku). The holiday was officially changed to celebrate the health and growth of both girls and boys in 1948.

On celebration day, Japanese Families with sons celebrate by flying carp-shaped windsocks called koinobori, the carp is a symbol of strength, courage and success. They decorate their houses with samurai armor and warrior dolls which symbolize bravery, and eat seasoned rice cooked in bamboo leaves and sticky rice balls filled with red bean paste.

There is very famous song which is related with this festival called "Koinobori (Carp streamers)".



First in Myanmar!

End to end cold chain logistics service



3 types of temperature management
(frozen, refrigerated, dry)
cold chain logistics center
and cold trucks

HACCP compliant
food management
system

ISO9001, ISO22000
international level
compliant

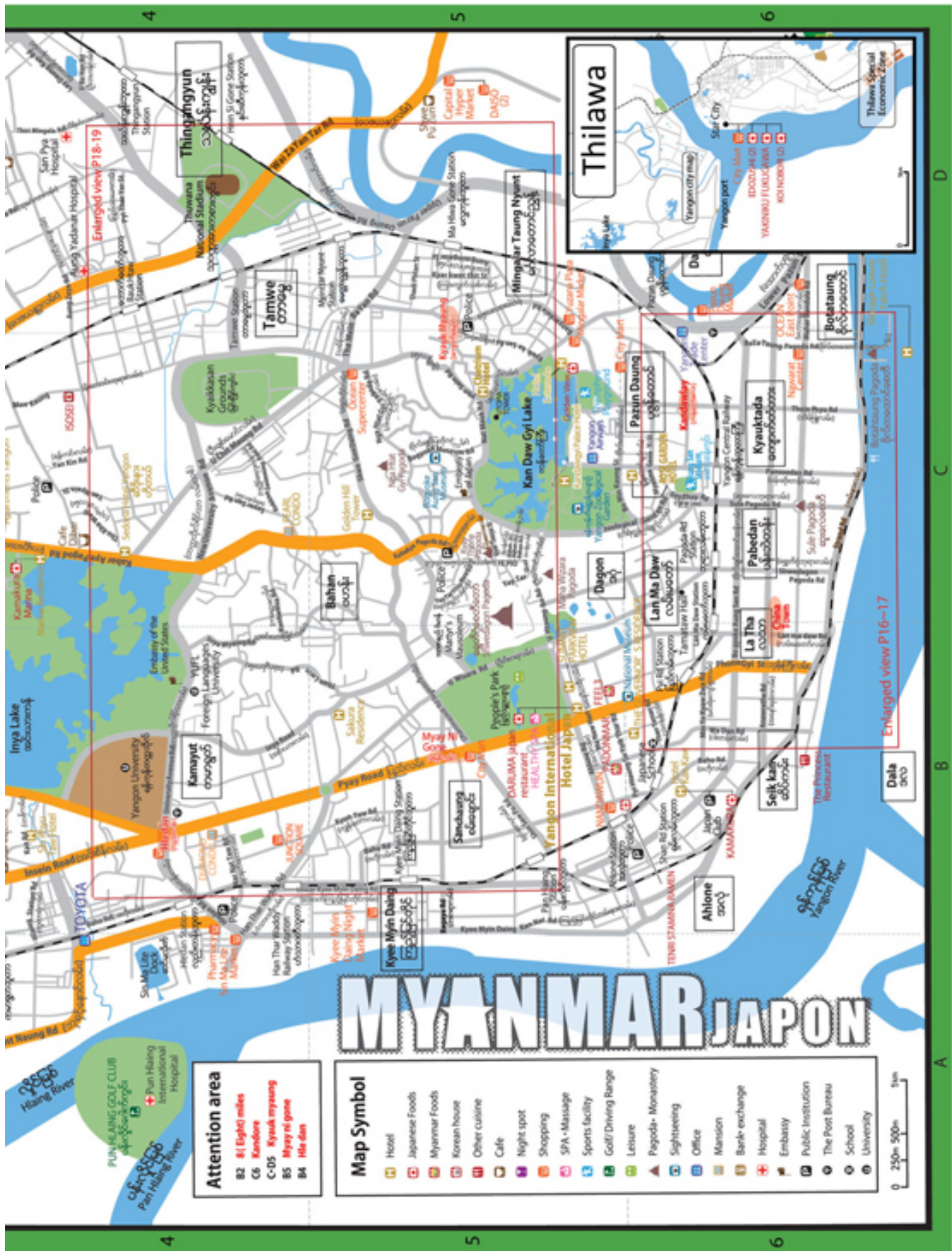
Affiliated with KOKUBU & SPA



KOSPA Cold Chain Logistics Co., Ltd.

2nd Floor, Building No.9, MICT Park,
Hlaing Township, Yangon

+95(0)1230 5227/8, +95(9)254044392
sales.kospa@gmail.com
or OKA(Mr.) - t06.oka@kpost.kokubu.co.jp
<http://www.kospacoldchain.com>



* Whenever you go outside don't forget the Myanjapo MAP, if you forget Myanjapo MAP, don't go outside. • • <http://myanmarjapon.com> (Yangon MAP.PDF Edition)

MYANMAR JAPON

To request permission to reprint MAP from this publication, "Please contact us"

Downtown of Yangon

©MYANMAR JAPON CO.,LTD.

EXCISION CORD

Usual price ~~35,000~~ Kyats
special price **25,000** Kyats

■ Do you have any problem with your electric extension cords?
■ Have you experienced damage to your devices when power is restored after an outage?

Panasonic protects your important devices

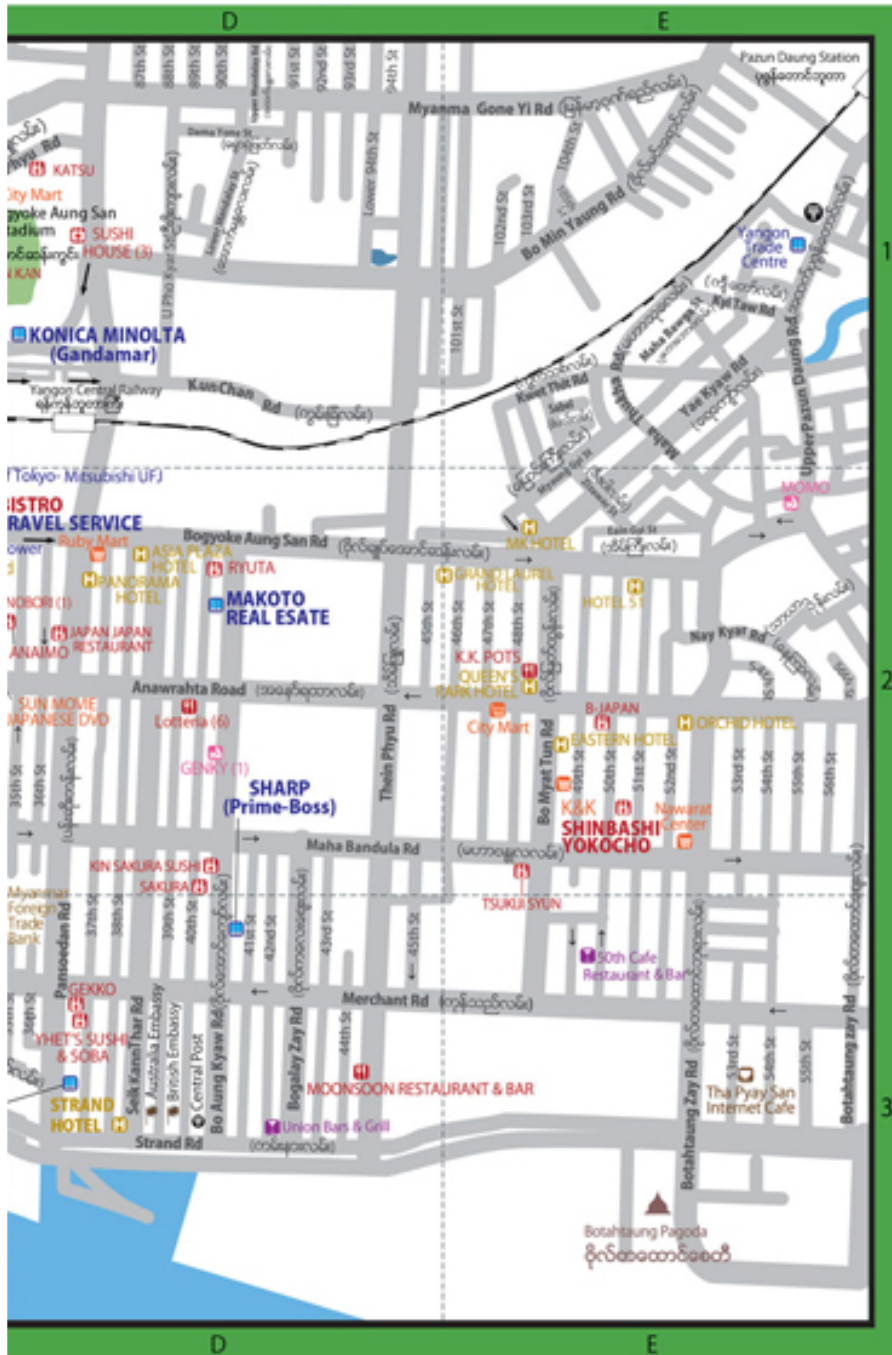
Safe • Reliable • Reasonable

- Power surge protection (especially for protecting against damage from outage restoration)
- With electric shock prevention shutter

*** Example of an accident**

An air cleaner device suddenly short circuits due to a power surge caused by the electricity restoration after an outage. The Panasonic breaker extension cord prevents such accidents. Use Panasonic and such troubles will be gone.

Panasonic Asia Pacific Pte. Ltd. (Myanmar Branch)
G-15, Tower D, Pearl Condominium, Kabar Aye Pagoda Road, Bahan Township, Yangon.
kiyokazu.katsumata@mm.panasonic.com / 09-45000-7506 (Katsumata) Sales Agency: Yandayar Trading Co.,Ltd.



BAHAN GALLERY (Myanmar)

Authentic artworks for your home or office



Born in Golden Land (MT.Oung)
(48x60 inch)



Golden Rock (Kyeae Soe)
(18x24 inch)



(Dazaung Daing)
Kyaik Lat Win Maung
(16 x 24 inch)



(U Thaing Lin)
(36x24 inch)



(U Hla Han)
(102x77inch)

Our customer can buy on website
www.bahangallery.com

Ei Ei Chaw
Tel:01-8604301
Email:info@bahangallery.com

Supported by **MYANMAR JAPAN**

WHERE PERSONAL SERVICES MEET LUXURY

ROSE GARDEN HOTEL
171, Upper Pansodan Rd, Yangon, Myanmar. Tel: 01-371992
www.theroseyangon.com, www.facebook.com/theroseyangon

*Whenever you go outside don't forget the Myanjapo MAP.if you forget Myanjapo MAP,don't go outside. • • <http://myanmarjapon.com> (Yangon MAP • PDF Edition)





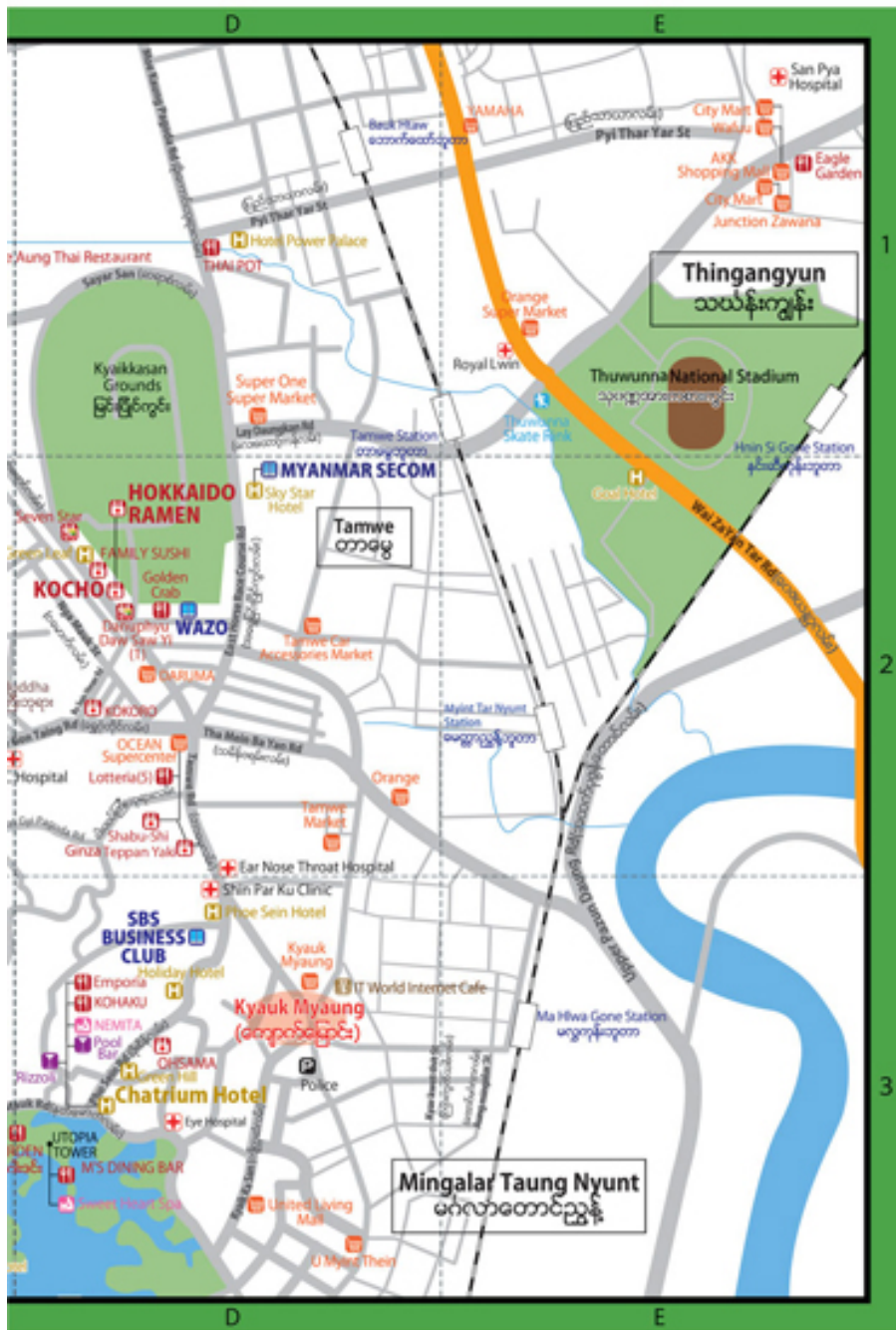
Receiving benefits from mountains in ASO,YUFU,AJIMU.
Receiving benefits from rivers in HITA,TENRYO,BUNGO OHINO,TAKETA and BUNGO Strait.
BUNGO,the country receiving wealthy benefits of nature.
Furthermore,our own long established wealthy food culture.
We,BUNGO TEPPAN-YAKI (TEKKAN), offer you the finest level beef,BUNGO GYU, and
seasonal ingredients from BUNGO, and local chinos SAKE.
Please enjoy blessing of nature in BUNGO,where you may feel away from daily noises.

We started lunch !!

No.20, Rm 01, City Channel Complex,
Pearl Street,Bahan Township,Yangon.

OPEN 11:30~14:00
17:30~22:00
10:30-21:00
*Regular holidays

TEL 0931062647
WEB <http://tekkon.jp>
MAIL info@tekkon.jp



Business and Lifestyle information in Myanmar



ONLINE

- ★ Update Business news
- ★ Real Estate
- ★ Recruitment
- ★ Restaurant
- ★ Useful information
- ★ Myanmar Japon +Plus provides services including foreign partner introduction and sales channel development



<http://plus.myanmarjapon.com>



GYMBOREE PLAY & MUSIC

Growing young minds around the world.

Gymboree has been fostering creativity and confidence in children ages 0-5 for over 30 years. Today there are over 700 locations in nearly 40 countries, making us the global leader in early childhood development programs.



- Art**
Open-ended play
Encourage creativity
In-hand and
interactive arts
- Music**
Songs & more songs
Explore music
through play,
activity and song
- Play & Learn**
Songs & more songs
Natural confidence,
curiosity and personal
skills through play
& learning activities
- Sports**
Songs & more songs
Gentle and fun
activities for
different ages
- Family**
Songs & more songs
Bring all your children
to the table where the
play and learn together
as a family
- School Skills**
Songs & more songs
It's our preschool
alternative. Students
may social and
interact with peers.

Play as you grow, learn as you go. From gentle play activities to parent-led discussions, discover special ways to bond with your baby as you make new friends. 0-5 years.

Address - Unit 226, Block C, Pearl Condo, Kabar Aye Pagoda Road, Bahan, Yangon, Myanmar.
Phone - +95 925 9999 113, +95 979 7777 311

gymboreeclases.com.mm



AVAILABLE ADVERTISEMENT

ကြော်ငြာ ထည့်သွင်းနိုင်ပါပြီ



English Language Take Free Magazine

info@myanmarjapon.com
Tel: 0931019178/01-8604301

Japan Heart Concert by Orphanage and School for the Blind students



On March 20, Japanese NGO Japan Heart held a concert at the Strand Hotel in Yangon. Around 300 students from Japan Heart's "Dream Train" orphanage and its "Kye Myin Daing Massage School for the Blind" participated.

The concert was titled "Music Train" and was built around the story of galactic trains powered by music circling planets. Students performed traditional Myanmar dance and ethnic music, while a volunteer orchestra from Japan accompanied them. The students were delighted by the music and had a sparkle in their eye.

JCCY holds seminar Minister-Counselor Maruyama discusses outlook for general election



The Japan Chamber of Commerce and Industry Yangon (JCCY) held a seminar for members on March 5 at Chatrium Hotel.

The Minister-Counselor of the Embassy of Japan, Mr. Ichiro Maruyama, gave a speech on the outlook for the Myanmar general elections in this year. Also, regarding the Thilawa SEZ which is being built with Japanese cooperation, he commented "We will make it a success no matter what". JETRO (Japan External Trade Organization)'s local Director, Mr. Masaki Takahara pointed to rising Myanmar labor costs. JICA (Japan International Cooperation Agency) Myanmar Director, Mr Masahiko Tanaka explained the state of Myanmar's infrastructure.

Myanmar's first home-grown tablet Japanese role in marketing



On March 10 in Yangon, the first tablet device developed by a Myanmar company, the GMD "be tablet 10" held a production launch event. The general marketer of the device was Loud Minority's president, Mr. Hotta.

Mr. Hotta was responsible for naming the tablet, marketing strategy, and organizing the launch event. He designed the logo "be" around Japanese tastes for simplicity. He also made an image video of young girls doing a fun dance on Yangon's streets to promote the product.

He said "We are not aiming for a 'gorgeous' product, but we want something you can feel close to."

Japanese literature translation contest Myanmar translators tackle the works of Akutagawa



On March 14, the Japanese Embassy and the Myanmar Association of Japanese Alumni (MAJA) jointly launched the "Japanese Literature Translation Contest" to translate from Japanese to Myanmar.

It is the 10th time to hold the event, and this year contestants will translate Ryunosuke Akutagawa's short story "Mikan" about meeting a young lady on a train. Myanmar students of Japanese language will endeavor to translate Akutagawa's esoteric writing into beautiful Myanmar language. The results of the contest will be announced at the Japanese Speech Contest in July. The winner will be invited to Japan for a research program.

Nippon Express donates a school building to a monastery school to prevent flooding during rainy season



On March 9, Nippon Express, a logistics company which has started operations in Myanmar, donated a school building to Dham Ma Di Pa Monastic School on the outskirts of Yangon in Thanylin. The Mekong Institute also cooperated.

According to school officials, during rainy season the classrooms get flooded, and it's not uncommon for students to get soaked while they study.

At the opening ceremony, the head of Nippon Express East Asia and Oceania, Mr. Takahashi gave a speech. The temple representative expressed his gratitude "This school building is very important".

Leaders of business help monastic schools Japanese companies cooperate to support education



The "Monastic School Support Team", formed by representatives from Japanese business and economics, recently built a 3 story elementary school building in Yangon's Mingaladon area. The group was formed by the ex-president of Nikkei Shimbun newspaper, Mr. Sugita and he organized the cooperation of 4 managers and 18 companies including Sumitomo Forestry and Daiwa Securities which have deep ties with Myanmar.

On March 19, the Tokyo Stock Exchange president Mr. Kiyota presented a commemoration flag at the opening event. The team also distributed notebooks, pencils, and stationery material. The team plans to open a new school building every year.

We cover Myanmar events and seminars. If you have any corporate and social events which you would like covered, or any Japan -related news then please send us the information. edit@myanmarjapon.com



Myanmar students return from Meitokugi Juku School Report their experiences to Myanmar Japan

On March 12, two Myanmar overseas students studying in Meitokugi Juku School in Kochi Japan returned to Myanmar and visited the offices of Myanmar Japan to report on their overseas student experiences. They had received a 1 year scholarship from the school to study Japanese. The students were Thiri Cho (age 18) and Wint War Thin (age 17) and they had grown up supported by ES4E. Thiri Cho shared stories of hardship including "the food was different, and for 1 week I had trouble eating". But they have many memories of eating together with Japanese. The two students hope to study at Japanese universities.



Seminar on solar energy and the environment Sponsored by Panasonic

On March 20, Panasonic and its local partner "Myanmar's SolaRiseSys" held a seminar at MICT Park on the topic of "Design of solar power generation and environmental solutions". At the seminar, both companies introduced their solar power systems and environmentally friendly electrical devices. There were around 60 attendees including technologists interested in solar power systems, architects, and businessmen.

Panasonic Asia Pacific's Mr. Katsumata, the Myanmar branch vice head greeted the seminar, and both companies emphasized the wide range of environmental products they were cooperating together on.



Myanmar entranced by Rena Tanaka Japanese Cinema Society at the Japanese Embassy

During March, the Japanese Embassy in Yangon screened Japanese films starring Rena Tanaka for the Japanese Cinema Society. On March 19, they showed "First Love" about a female high school student who is forced to mature when her mother gets sick, and on March 21, they showed "Get It All" about a girls boat club and stories of growing up. Over 100 people enjoyed the event including those with interest in Japan and Japanese and their families.

The embassy plans to give away gifts over facebook. Japan is trying to win over the hearts of Myanmar youth, who are crazy about Korean dramas.



Repairing previously "unfixable" trains Japanese cooperation brings them back to life

Myanmar railways used to import used trains from Japan. On March 20, those trains which had been damaged and couldn't be repaired with local skills were brought back to life through Japanese cooperation. With financial support from the Nippon Foundation, the Transport Strategy Research Institute implemented the assistance. With cooperation from private enterprise, they changed the engines and radiators and repaired both trains. They also provided technical support.

Based on 2013 research, of the 165 cars imported from Japan, 81 cars are damaged and cannot be used. Lacking design blueprints and technology, the vehicles could not be repaired until now. Through these activities, Japan is transferring maintenance technology to Myanmar.



Japan-Myanmar soccer game in Ayeyawady Over 200 locals come to watch

On March 22, there was a soccer exchange event between Japan and Myanmar at Hta Ni Taw and Wah Taw villages in Ayeyawady area. The Nippon Foundation sponsored the event, and the Yangon Japan Society soccer members participated with an adult and child team. The Myanmar side was selected from local villagers and the game was played on an open field. Over 200 villagers came to watch so it was a big event. At the main event, the adult game, in the first match Mr. Matsushita scored 2 goals and Japan won 3-1. But in the second match, the Japanese were caught off guard by the change in teammates and Myanmar won 1-0.



Yokohama F. Marinos and ANA conduct kids soccer school

On March 21, J-League Yokohama F. Marinos and ANA held a children's soccer school at Yangon's Thuwunna Stadium. Ex-national player Mr. Hato and F. Marinos coaches came to Myanmar. Under professional guidance, Myanmar children and Japanese children living in Myanmar enjoyed playing soccer. The children did training exercises involving games such as holding hands and dribbling together. They then played a match. ANA was connected to the event through its management of F. Marinos predecessor soccer club, Yokohama Flugels. They will sponsor the same event next year.

Myanmar International Education & Career Fair 2015

June 19 to 21, 2015

Tatmadaw Hall
Yangon, Myanmar



hot line: 09 30331405

www.miecf.net

Organized by:



Dagon Exhibitions Limited

Myan-Japon Information

At this corner, a new product and new service, various events and campaigns, news send various information of Yangon.

Novotel Yangon Max

The Five Star Novotel Yangon Max Hotel Opened in Yangon



On April 3, the new five star Novotel Yangon Max Hotel was opened in Yangon, Myanmar. It is located between Yangon International Airport and downtown. It is close to the famous Shwedagon Pagoda and to most embassies and located right across from the historical Yangon University Campus.

The 5-star hotel offers 366 contemporary rooms has good WIFI connection and extensive food & beverage selection. Choose from 3 restaurants of Japanese, Chinese and French, 4 bars of Music Bar, Lounge Bar, KTV & Member's Bar, Pool Bar and 24 hour room service. They have a 350 sqm fitness center, Tennis court, Spa, Hair Salon, Yoga room, and swimming pool Jacuzzi.

For meetings & events, the rooms range from 55 to 161 sqm and can accommodate up to 160 guests, 2 Ballrooms and 1 Conference room. The hotel is a Best Choice for both business and leisure travelers.

For more information and further purpose:

Contact to 459 Pyay Road, Kamayut Township, and PO Box 895,
Email: H9045-RE@accor.com. Tel: + 95 (1) 2305858

Chatrium Hotel

Mother's Day Special Promotion at Chatrium Hotel



Chatrium Hotel Royal Lake Yangon is offering a Mother's Day Special promotion on 10, May 2015. On this day, treat your Mom to Lunch or Dinner at Chatrium Hotel Royal Lake Yangon with love, serenity and peacefulness! During this special occasion, Tiger Hill Chinese Restaurant and Kohaku Japanese Restaurant will offer Mother's Day Set Lunch and The Emporia restaurant will offer Buffet Dinner including one glass of fruit juice, a complimentary Mother's Day cake and Mother's Day card with instant family photo.

Set Lunch at Tiger Hill Chinese Restaurant and Kohaku Japanese Restaurant - US\$ 25 net per person and Buffet Dinner at The Emporia Restaurant - US\$ 40 net per person. Offer only on 10th May 2015, minimum order starts from 2 people and book in advance

For booking and more information: 95 1 544500 Ext 6287 (or) fb.chry@chatrium.com

USEFUL INFORMATION

*** Information as of April 1, 2015. Details may change without notice.

[Dear business owners, please notify us of any changes to your information. ✉ edit@myanmarjapan.com]

Gourmet and Restaurants

☆...benefits discount of Japanese Association ... (5% to 10%, conditions vary depending on the shop)
 ☆... (There is some preferential discount with JCB Card)

Japanese cuisine

AJISAI P16-B2

📍 No.99, Shwe Taung Tan Street, Lanmadaw Township, Yangon
 ☎ 09-450040795 / 09-5135282 ☎ 10:00-22:00 (Daily)

AJISHIN P18-C1

📍 18(B), Thukhawadi Lane, Sunnirak Park, Yankin Township, Yangon

☎ 01-562701 ☎ 11:30-23:00 (Open Daily)

ANAIMO P16-C2 ☆

📍 300, Mahabandula Park Street, Kyauktada Township, Yangon
 ☎ 01-378022 ☎ 11:30-14:00 / 17:30-22:30 (Saturday only evening and Sunday off)

B-JAPAN P17-E2

📍 Bldg 115, Anawrahta Road, Corner of Anawrahta Road & 50th Street, 1 Quarter Pazundoung Township, Yangon ☎ 01-398629 ☎ 17:00-23:00 (LO 22:00) ☎ closed on Mondays

Best Sushi & Foods Center

📍 No.131, Kyar Kwat Thit Street, Corner of Dhama Seinta Street and Dhama Wilhara Street, Kyauk Myaung, Tamwe Township, Yangon

☎ 09-252365139 ☎ 7:30-10:00

DARUMA JAPANESE RESTAURANT P15-B5

📍 Yangon International Hotel Japan, Ahlone Road, Yangon
 ☎ 09-49270271 / 09-31263016 ☎ 11:00-23:00 (Daily)

DINING FUKUROU P18-C1

📍 No.81(C), New University Avenue Road, Bahan Township, Yangon
 ☎ 01-542871 / 09-420231330 ☎ 11:00-15:00 / 17:00-22:00 (Open Daily)

EDOZUSHI P18-B2

📍 No.290-B, U Wisara Road, 10 Ward Kamaryut Township, Yangon ☎ 09-239040853 ☎ 11:00-23:00 (Sunday 17:00-21:00)

(2)  P15-D6 📍 A-1, Star City, Kyauk Khaik Pagoda Road, Thanlyin Township, Yangon

☎ 056-23150-53 / 056-23313-318 (Ext-1183) / 09-2560-75020 ☎ 11:00-21:00 (Open Daily)

(3) JYAKINIKU FUKAGAWA P15-D6

📍 A-1, Star City, Kyauk Khaik Pagoda Road, Thanlyin Township, Yangon
 ☎ 056-23150-53 / 056-23313-318 (Ext-1184) / 09-2560-75020 ☎ 11:00-21:00 (Open Daily)

FAMILY SUSHI P19-D2

📍 Room 104, Building 27, U Chit Maung Housing, U Chit Maung Street, Tamwe Township, Yangon
 ☎ 09-73119456 / 09-5077223 ☎ 10:00-23:00 (Open Daily)

FU-RIN P16-A2

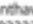
📍 No.210, Anawrahta Road, Lanmadaw Township, Yangon ☎ 01-211702 ☎ 11:30-14:00 / 17:00-23:00 (No fixed holiday)

FUJINOBO P18-C2

📍 (Cherry Hills Hotel) No.520/4 A, Kabar Aye Pagoda Road, Shwegon Daing, Bahan Township, Yangon ☎ 09-450067052

☎ 6:00-10:00 (LO 9:30) / 11:30-15:00 (LO 14:00) / 17:00-23:00 (LO 22:00) (Open Daily)

FUJI JAPANESE RESTAURANT

(1)  P18-A2 📍 37, Harihawaddy Road, Kamaryut Township, Yangon ☎ 09-73022338-9 / 01-514776 ☎ 11:00-21:30 (Daily)

(2)  P18-B2

📍 Market Place, Bahan Township, Yangon ☎ 09-73022339 ☎ 9:00-21:00 (Open Daily)

(3)  P18-A2 📍 Junction Square

☎ 9:00-21:00 (Daily) ☎ 09-261767259

FURUSATO P18-B3

📍 No.137, West Shwe Gon Daing, Bahan Township, Yangon ☎ 01-556265 / 09-73081914 ☎ 11:00-14:00 / 17:00-22:00 (Open Daily)

GEKKO P17-D3

📍 535, Merchant Street, Kyauktada Township, 4th Quarter, Yangon
 ☎ 01-386986 ☎ 9:00-28:00 (Open Daily)

GOLDEN VIEW P15-C5

📍 No.23, Golden View Tower(A)G3, U Aung Myat Street, Mingalar Taunggyunt, Yangon
 ☎ 01-8619194 / 09-5080466 ☎ 10:00-22:00 (Daily)

HANA P16-B2

📍 No.81(A), Latha Street, Latha Township, Yangon
 ☎ 01-371508 / 09-5109435 / 09-31293852 ☎ 10:00-22:00 (Open Daily)

HARU P18-C2

📍 81, Kabar Aye Pagoda Road, Bahan Township, Yangon ☎ 09-421149721
 ☎ 11:00-14:00 / 18:00-22:00 (Open Daily)

HEIWA na JAPANESE RESTAURANT P16-C2

📍 No.207, 32 Street, Upper Block, Pabedan Township, Yangon
 ☎ 01-375931 / 09-73191927 ☎ 11:00-14:30 / 17:00-22:30 (LO 22:00) (Daily)

HELLO

(1)  P18-A1

📍 No.2, Room-3, Narnattaw Road, Kamaryut Township, Yangon ☎ 01-514010

(2)  P18-A2 📍 2nd Floor, Junction Square, Yangon

☎ 01-527242 (Ext. 3026)

☎ 9:00-21:00 (Open Daily)

HOKKAIDO P19-D2

📍 5-4, U Chit Maung Housing, Tamwe Township, Yangon
 ☎ 09-254191597

HORN P18-B2

📍 No.36(A), Golden Valley Street, Quarter(2), Bahan Township, Yangon
 ☎ 01-513404 / 09-420003996 ☎ 11:00-14:00 / 17:00-22:00 (Open Daily)

HOTARU P18-A2

📍 Building(5), Top Floor, Junction Square, Kamaryut Township, Yangon
 ☎ 09-73193966 ☎ 11:00-22:00 (Open Daily)

ICHIBAN KAN P16-C1 ☆

📍 G17/18, Aung San Stadium(North Wing), Gyophyu Street, Mingalar Taunggyunt Township, Yangon
 ☎ 01-394824 / 01-393051 / 09-420077600 ☎ 11:30-14:00 / 17:30-22:00 (Open Daily)

ISOSEI P15-C4

📍 47/B, Moe Kaung Road, Kyauk Kone, Yankin Township, Yangon. ☎ 09-250059308 ☎ 11:00-14:00 / 17:00-22:00 (Monday off)

IZUMI P18-A1 ☆

📍 8G Diamond Condominium, Pyay Road, Kamaryut Township, Yangon ☎ 01-1221262 / 09260911585 ☎ 11:00-14:00 / 17:30-22:00 (No fixed holiday)

JAPAN JAPAN RESTAURANT P23-D2

📍 No.253, Pansodan Upper Block, Kyauktada Township, Yangon
 ☎ 09-5130016 / 09-49577448 ☎ 11:00-22:30 (Daily)

KAMAKURA P15-B6

📍 1 Floor, HOTEL KAN KAW, No.93(A), Hnin Si Kone Street, Ahlone Township, Yangon
 ☎ 01-228566 (Ext.122)

☎ 7:00-9:30 / 11:00-14:30 / 17:00-23:00 (Open Daily)

KAMAKURA Marina P15-C4

📍 (Inside of Marina Residence) 8 Kabar Aye Pagoda Road, Ward No.10 Mayangone Township, Yangon
 ☎ 01-650651 (Ext.8100) / 09-420048231 ☎ 11:00-14:00 / 17:00-22:00 (Open Daily)

KAMAKURA TEI P18-B4

📍 Myanmar Culture Valley (B16), People's Park People's Square, U Wisara Road, Dagon Tsp, Yangon
 ☎ 09-32359047 ☎ 9:00-17:00 (Open Daily)

KATANA P18-C1

📍 138 C, New University Avenue Road, Bahan Township, Yangon ☎ 01-400842 ☎ 11:00-14:30 / 17:30-23:00 (LO 22:00) (Open Daily)

KATSU P17-D1

📍 No.8-2, Aung San Stadium(North Side), Yangon
 ☎ 01-381233 / 09-250402200 ☎ 11:30-14:00 / 17:30-22:00 (2nd & 4th Sunday off)

KIN SAKURA SUSHI P17-D2

📍 BAK, Olympic Tower, First Floor, Bo Aung Kyaw Street, Kyauktada Township, Yangon
 ☎ 01-256720 (Ext.204) / 09-5147840 / 09-250150816 ☎ 11:00-21:00 (Open Daily)

KIREI P16-C1

📍 Plaza31/1, Bo Yar Nyunt Street, Dagon Tsp, Yangon
 ☎ 09-32142739 / 09-254162292 ☎ 11:00-15:00 / 17:00-22:00 (Open Daily)

KOBEYA P18-A1 ☆

📍 615(B), Marlar Street, Pyay Road, Kamaryut Township, Yangon ☎ 01-535072 / 09-420015401 ☎ 11:00-14:00 / 17:00-23:00 (Open Daily)

KOCHO P19-D2

📍 5-4, U Chit Maung Housing, Tamwe Township, Yangon ☎ 09-254191597 ☎ 11:30-14:00 / 17:30-22:00 (Open Daily)

KOHAKU P19-D3 ☆

📍 (Chatrium Hotel) No.40, Natmauk Road, Tamwe Township, Yangon ☎ 01-544500 (Ext.6231) ☎ 11:30-14:00 / 18:00-22:30 (Open Daily)

KOI NOBORI (1) P16-C2

📍 No.1285), Bandoohla Panchan Street, Upper Block, Kyauktada Township, Yangon
 ☎ 097-9527-4691 ☎ 11:00-24:00 (Open Daily)

(2)  P15-D6 📍 Star City, Thanlyin Township

☎ 09-262358468 ☎ 11:00-23:00 (Open Daily)

KOKORO P18-D2

📍 55, Bo Sein Mhan Street, Bahan Township, Yangon
 ☎ 01-549544 / 01-4985376 ☎ 11:00-22:00 (Daily)

Ko San 19th Street P16-B2

📍 108, 19th Street, Latha Township, Yangon
 ☎ 01-503232 / 09-428038032 ☎ 12:00-24:00

Ko San Cafe P18-A1

📍 18, U Tun Lin Chan Street, Hledan, Yangon
 ☎ 01-706437 ☎ 8:00-23:00 (Open Daily)

KU-KAI Ramen P16-B2

📍 No.125), 19th Street, Latha Township, Yangon
 ☎ 01-250714 ☎ 18:00-23:30 (Open Daily)

LITTLE TOKYO (1) P14-B3

📍 10(D), khaboung Road, Hlang Township, Yangon
 ☎ 09-73185168 / 09-73178946 ☎ 10:30-22:00 (Daily)

(2) LITTLE TOKYO RAMEN HOUSE P18-A2

📍 2nd Floor, Junction Square, Yangon
 ☎ 09-73200185 ☎ 9:30-21:00 (Open Daily)

MANPUKU P16-A1


📍 30, Sagawar Street, Dagon Township, Yangon
 ☎ 01-214284 / 09-8300426 / 09-5046736 ☎ 15:00-23:00 (LO 22:00) (Open Daily)

MARU GRILL RESTAURANT P16-B2

📍 No.134 Ground Floor, Shwe Taung Tan Road, 7 Quarter, Lanmadaw Township, Yangon
 ☎ 01-1221568 / 09-420308350 ☎ 11:30-14:00 / 17:30-22:00 (Open Daily)

MINA-O

(1)  P16-C1 📍 No.284/286, Yaw Min Gyi Street, Dagon Township, Yangon
 ☎ 01-242433 ☎ 11:30-22:00 (Open Daily)

(2)  P16-C1 📍 Prime Hill Business Square

☎ 01-242433 ☎ 11:00-18:00 (Sat, Sun Off)

MIYOSHI RAMEN P16-C1 ☆

📍 42/E, Bo Yar Nyunt Street, Dagon Township, Yangon ☎ 09-42008866 ☎ 11:00-15:00 / 17:00-22:30 (Sunday off)

MIYAKO P14-D3

📍 No.850, 10 Ward, Than Thu Mar Road, South Okkapa Township, Yangon
 ☎ 01-579781 ☎ 11:00-22:30 (Daily)

MONDO P16-C1

📍 No.26-B), Yaw Min Gyi Street, Dagon Township, Yangon ☎ 01-252261 ☎ 11:30-14:00 (Mon-Fri) ☎ 17:30-23:00 (Closed on Sunday)

M'S DINING BAR P19-D3 ☆

📍 Utopia Tower, Bogyoke Park, Kandawgyi National Park, Forest Zone, Bahan Township, Yangon
 ☎ 09-73195028 / 09-5169939 ☎ 11:00-14:00 / 16:00-22:00 (Open Daily)

NAGASAKI TEI P14-B3 ☆

📍 No.56(B), Thiri Marlar Street, 7 Smile, Pyay Road, Mayangone Township, Yangon
 ☎ 01-461350 / 09-5133506 ☎ 11:30-14:30 / 17:30-22:00 (Tuesday off)


NEW DOREEN P16-A1

📍 164, 168 Upper Warden Street, Lanmadaw Township, Yangon
 ☎ 01-223697 / 09-43067113 ☎ 7:00-22:00 (Daily)

OHSAMA P19-D3

📍 No.28/B, Pho Sein Road, Natmauk Quarter, Tamwe Township, Yangon ☎ 01-555539 ☎ 09-31382082 / 09-30224438 ☎ 16:00 23:00 (Daily)

OISHII

(1)  P16-B2

📍 No.98, Latha Street (Middle Block), Latha Township, Yangon

☎ 01-708685 ☎ 10:00-22:00 (Open Daily)

(2)  P16-B2

📍 No.69, Shwe Daung Tan Street (Middle Block), Lanmadaw Township, Yangon

☎ 09-31287053 ☎ 10:00-21:30 (Open Daily)

OTA-KE **P18-C3**

Address-Kandawgyi Palace Hotel
Kan Yeik Tha Rd, Yangon, Myanmar
☎ 01-249255-9 (Ext. 7444, 7999)
🕒 11:00-14:00 / 18:00-22:30 (Daily)

REN **P18-C2**

53, Sayarsan Street, Bahan Township, Yangon
☎ 01-1222488 🕒 11:00-24:00 (Open Daily)

(2) MAP P16-C1

Prime Hill Business Square, Dagon Township, Yangon
☎ 11:00-19:00 (Sat, Sun Off)

RYUTA **P17-D2** ☆

No. 249-B, Ground Floor, Corner of 40th Street & Bogyoke Aungmye Road, Kyauktada Township, Yangon
☎ 09-250191419
🕒 11:30-14:00 / 17:00-22:00 (Open Daily)

SAKURA **P17-D2**

150, 40th Street (Lower Block), Kyauktada Township, Yangon ☎ 01-245160
🕒 12:00-15:00 / 17:00-21:30 (Closed on Monday)

SAMURAI STYLE **P18-C1**

(Inside Onocoro) Near Yankin Market & Sayar San Road, Yankin Township, Yangon
☎ 09-254265526
🕒 11:00-22:00 (Open Daily)

SAMURAI SUSHI **P18-C3**

4EF, Ground Floor, Winkabar Street, Bahan Township, Yangon
☎ 09-73081871 / 09-5123240
🕒 11:00-22:00 (Open Daily)

SEI **P18-C2** ☆

(Aye Chan Thar Hotel) No. 292/16 Aye Chan Thar Yar Road, Middle Shwe Gone Daing, (9) Block, Bahan Township, Yangon
☎ 01-542222 🕒 17:00-23:00 (LO 22:00) (Monday off)

SHABU-SHI **P19-D2**

(Ocean Super Center)
Corner of Shwe Gone Daing Road and Ba Nyar Dala Road, Bahan Township, Yangon
🕒 10:00-22:00 (Open Daily)

(2) MAP P18-A2

Junction Square, Kamaryut Township, Yangon
🕒 9:00-21:00 (Daily) ☎ 09-251043478

SHIAWASE SUSHI **P16-C1**

No. 38-40/1(A), Boyaryryunt Street, Dagon Township, Yangon
☎ 09-49259184 / 09-450046434
🕒 9:30-21:30 (Open Daily)

SHIKI-TEI **P16-C1**

(Park Royal Yangon), No. 33, Alan Pya Phaya Road, Dagon Township, Yangon
☎ 01-250388 (Ext. 8119)
🕒 11:30-14:30 / 18:00-23:00 (Open Daily)

SHOSUKE **P14-C3**

No. (208, A), Parami Road, 4-Ward, South Okkalapa Township, Yangon
☎ 09-254137655 🕒 11:00-24:00 (Open Daily)

SUSHI HOUSE ☆ **P18-C2**

No. 247/269 B, Room 001, Build C, Delta Plaza, Middle Shwe Gone Daing Street, Bahan Township, Yangon
☎ 01-552772 🕒 11:00-22:00 (Open Daily)

(2) MAP P16-A1

No. 45, Room B023, Basement(B1), Tawwin Center, Pyay Road, Dagon Township, Yangon
☎ 01-8600111 (Ext. 1123)
🕒 9:00-21:00 (Open Daily)

(3) MAP P17-01

Aung San Stadium (East Side), Yangon
🕒 11:00-22:00 (Daily) ☎ 01-255505

SUSHI KICHI **P16-A2**

No. 105, Phone Gyi Road (Middle Block), Lanmadaw Township, Yangon
☎ 01-218282-4 🕒 10:00-22:00 (Open Daily)

SUSHI YANGON **P18-B3**

Myanmar Culture Valley, People's park & People's Square, U Wizara Road, Dagon Township, Yangon
☎ 09-5030471 / 09-5005613
🕒 9:00-22:00 (Open Daily)

TEKKAN **P18-B2**

No. 20, RM-01, City Channel Complex, Pearl Street Bahan Tsp, Yangon ☎ 09-31062647
🕒 11:30-14:00 / 17:30-22:00 (LO 21:30)

TENRI STAMINA RAMEN **P15-B6**

24, Baho Street, Ahlone Township, Yangon
☎ 09-73238771 🕒 10:00-22:00 (Open Daily)

TENRI STAMINA RAMEN **P15-B6**

24, Baho Street, Ahlone Township, Yangon
☎ 09-73238771 🕒 10:00-22:00 (Open Daily)

TSUKI **P16-C1**

No. 75/6, Bo Yar Nyunt Street, Dagon Tsp, Yangon
☎ 09-252040659, 09-799760372
🕒 10:00-22:00 (Open Daily)

TSUKIJI SYUN **P17-E2** ☆

Bo Myat Tun Condo, Building(A), Ground Floor, Room(G-03), Botahtaung Township, Yangon
☎ 09-31053910 / 09-420308588
🕒 11:30-14:00 / 17:30-23:00 (Sunday off)

TOMO **P16-B2**

No. 702, Mahabandoola Street, Latha Township, Yangon
☎ 01-251302 🕒 10:00-22:00 (Open Daily)

TORI **P18-B3**

135, Inya Road, Bahan Township, Yangon
☎ 09-250268732 🕒 18:00-24:00 (Open Daily)

URESHI KITCHEN **P16-B2**

No. 111, Shwe Taung Tan Street, Lanmadaw Township, Yangon
☎ 01-224810 🕒 9:00-22:00 (Open Daily)

(2) MAP P18-A1

Corner of Kyun Taw Road & Nar Nat Taw Street, Kamaryut Township, Yangon
☎ 01-536496 🕒 10:00-22:00 (Open Daily)

WASABI **P16-C1**

No. 38/40, Boyaryryunt Street, Dagon Township, Yangon
☎ 09-5039139 / 09-425020667
🕒 11:30-15:00 (LO 14:30) / 17:30-22:30 (LO 21:30) (Monday off)

YAKINIKU FUKU-CHAN **P18-C2** ☆

No. 28(A), Koking Swimming Pool Lane, Sayar San Main Road, Bahan Township, Yangon
☎ 01-544156 / 09-5177176
🕒 11:00-14:00 / 18:00-22:00 (Open Daily)

YAMAGOYA RAMEN **P18-C1**

No. (520), Uyin street, Sayarsan Quarter, Bahan Township, Yangon
☎ 01-1224122
🕒 11:00-15:00 / 18:00-22:00 (Sat, Sunday 11:00-22:00)

YHET'S SUSHI&SOBA **P17-D3**

No. 57, Ground Floor, 37th Street (Lower Block), Kyauktada Township, Yangon
☎ 01-377212 🕒 11:00-22:00 (Open Daily)

Myanmar cuisine**AUNG THU KA** **P18-B3**

17(A), 1st Street, West Shwe Gone Daing Road, Bahan Township, Yangon
☎ 01-525194 / 09-5005296 / 09-5100683
🕒 9:00-21:00 (Open Daily)

FEEL 3 **P15-B5**

No. 124, Pyithaungzu Yeiktha Street, Dagon Township, Yangon
☎ 09-73208132 / 09-73048783 🕒 6:00-20:30 (Daily)

HAPPY CAFE & NOODLES **P18-B1**

1048 Inya Road, Kamaryut Township, Yangon
☎ 01-536985 🕒 7:00-23:00 (Open Daily)

PADONMAR RESTAURANT **P15-B5**

No. 105/107, Kha-Yae-Bin Road, Dagon Township, Yangon
☎ 01-538895 / 01-1220616 / 09-73029973
🕒 11:00-23:00 (Open Daily)

SHAN YOE YAR RESAURANT **P16-A1**

No. 169, War Tan Street, Lanmadaw Township, Yangon
☎ 01-221524, 09-250-566-695
🕒 06:00-22:00 (Last Order 21:30) (Open Daily)

Other cuisine**ADAMAS** **P18-B2**

14, Kanbarazza Street, Golden Valley Bahan Township, Yangon
☎ 01-541064 / 01-526490 🕒 11:00-22:30 (Daily)

ASAGIRI Bar & Restaurant **P18-A1**

Corner of Kyun Taw Road and Nar Nat Taw Road Kamaryut Township, Yangon
☎ 01-539598 🕒 09:00-23:00 (Daily)

CAFE DIBAR **P18-B1**

No. (9) Kabaraye Pagoda Road, Corner of Thit Sar Road, Yankin Township, Yangon
☎ 09-500-6143 / 09-511-4932 🕒 10:00-22:00 (Open Daily)

CAFE NAPOLI **P18-C2**

No. 287, East Shwe Gon Dine Road, Bahan Township, Yangon.
☎ 01-554957 / 09-420207233 / 09-250108513
🕒 10:00-21:30 (Daily)

(2) MAP P18-B2

No. (41/1), Inya Myaing Street, Golden Hill Avenue, Bahan Township, Yangon
☎ 01-538557 / 09-32233038 🕒 10:00-21:30 (Daily)

DELI CAFE & CAKES BAKERY CAFE **P14-A1**

No. 1 Kaba Aye Pagoda Road Yankin Township Yangon.
☎ 01-666 900. 🕒 7:00-21:00 (Open Daily)

FRIENDSHIP RESTAURANT **P14-C2**

No. 102, Nawaday Theatre, Corner of Kaba Aye Pagoda Road & Oak Pone Seik Road, Mayaungone Township, Yangon
☎ 09-49322498 / 01-664741 (Ext. 106)
🕒 9:00-14:00 / 16:00-22:30 (Open Daily)

GOLDEN CRAB **P19-D2**

No. 28, Ground Floor (Right Side), South Horse Race Course Street, Tamwe Township, Yangon
☎ 01-541331 / 09-73139172 🕒 11:00-22:00 (Daily)

GOLDEN DUCK Restaurant **P15-C4**

Sayarsan Branch ☎ 09-73163366 / 09-73163377 🕒 11:00-21:45 (Daily)
Junction 8 Branch **P14-B2**

☎ 09-8617477 / 09-73355733 🕒 11:00-21:45 (Daily)

Kan Taw Min Branch **P18-B3**

☎ 01-736422 / 01-240216 🕒 10:30-22:00 (Daily)

Strand Road Branch **P15-C6**

☎ 01-241234 / 01-372603 🕒 10:00-21:00 (Daily)

HOUSE OF MEMORIES **P18-B2**

290, U Wizara Road, Kamaryut Township, Yangon
☎ 01-534242 / 01-525195 🕒 11:00-23:00 (Daily)

K.K.POTS **P17-E2**

No. 132, Corner of Anawrahtar Road & Bo Myat Htun Road, Botahtaung Tsp, Yangon
☎ 01-8610523, 09-402601706
🕒 10:00-14:30 / 17:00-22:00 (Open Daily)

L'OPERA **P14-C3**

No. 62/D, U Tun Nyein Street, Mayaungone Township, Yangon (Near Inya Lake Hotel)
☎ 01-665516 / 01-660976 / 09-730 30755
🕒 11:00-14:00 / 18:00-22:30 (Open Daily)

MOONSOON RESTAURANT & BAR **P17-D3**

No. 85-87, Thein Phyu Road, Botahtaung Township, Yangon
☎ 01-295224 / 01-378421 / 09-5015653
🕒 10:00-23:00 (Open Daily)

ORZO ITALIAN RESTAURANT **P18-C1**

No. 1 Kaba Aye Pagoda Road Yankin Township Yangon
☎ 01-666 900 🕒 18:30-22:00 (Open Daily)

PINNY HOUSE RESTAURANT **P15-B4**

No. 59, Baho Street, Hledan Township, Yangon
☎ 09-31915110 🕒 11:00-14:00 / 17:00-23:00 (Daily)

POOL BAR **P19-D3**

Ground Level, In pool garden CHATRIUM No. 40, Natmsauk Road, Tamwe Township, Yangon.
☎ 01-544500 (Ext. 6277) 🕒 10:00-18:00 (Daily)

POTATO BREAK FAST FOOD RESTAURANT **P18-B3**

Myanmar Culture Valley, U Wizara road, People's Park Yangon.
☎ 09-5002588 / 09-254320342 🕒 9:00-22:00 (Daily)

ROYAL GARDEN RESTAURANT **P19-D3**

Nat Mouk Road, Central Forest Zone, Kandawgyi Nature Park, Bahan Township, Yangon
☎ 01-546923 / 01-546202
🕒 6:15-14:15 / 18:00-22:30 (Open Daily)

SHWE KAUNG HOT POT

(1) **P18-C3** ☆ No. 18 Ko Min Ko Chin Road, Shwe Gon Daing, Bahan Township, Yangon
☎ 01-559339 🕒 10:30-22:30 (Open Daily)

(2) MAP P18-A1

Nanattaw Street, Hanthawaddy, Kamayut Township, Yangon
☎ 01-537731 🕒 10:30-22:30 (Open Daily)

SI CHUAN DOU HUA **P16-C1**

Inside Parkroyal, Alan Pya Phaya Road, Dagon Township, Yangon
☎ 01-250388 (Ext. 8118) 🕒 11:00-14:30 (Dim Sum)
🕒 16:00-21:30 (Buffet)

SIGNATURE RESTAURANT/GARDEN **P18-C3**

Corner of Bahan Street & Kan Yeik Thar Street, Bahan Township, Yangon
☎ 01-546487-8 / 01-543387

SKY BISTRO **P16-C2**

20th Floor, Sakura Tower, Bogyoke Aung San Road, Kyauktada Township, Yangon
☎ 01 255277 🕒 9:00-22:00 (Open Daily)

THE HOUSE

MAP P18-C1
 No.6, Kanbawza Street, Bahan Township, Yangon
 ☎ 01-8634400/01-554212 ☎ 11:00-24:00 (Daily)

THE EMPORIA RESTAURANT

MAP P19-D3
 Ground Level, CHATRIUM HOTEL
 No.40, Natmauk Road, Tamwe Township, Yangon.
 ☎ 01-544500 (Ext:6253) ☎ 06:00-10:30/
 ☎ 11:30-14:30/18:00-22:30 (Daily)

Tian Xiang Hot Pot

MAP P16-C1
 No.38/40, Ground Floor, Yaw Min Gyi Ward,
 Boyamyunt Upper Block Street, Dagon Tsp, Yangon
 ☎ 09-254266705/09-259600125

XI YANG YANG

MAP P18-A3
 No.4, Nyaung Tong Road, Sanchaung Township, Yangon
 ☎ 01-502582 ☎ 7:00-21:00 (Open Daily)

YOOGANE

MAP P19-D1
 Building (C), Ground Floor, Pearl Condo
 Bahan Tsp, Yangon
 ☎ 09-421176800 ☎ 10:00-22:00 (Open Daily)

HOTEL

BELMOND GOVERNOR'S RESIDENCE

MAP P15-B6
 No.35, Tau Win Road, Dagon Township, Yangon
 ☎ 01-229860 / 01-229861

BEST WESTERN GREEN HILL HOTEL

MAP P19-D3
 No.12, Pho Sein Road, Tamwe Township, Yangon
 ☎ 01-209299 / 01-209300, 209343, 209345

CENTRAL HOTEL

MAP P16-C2
 335-337, Bogyoke Aung San Road, Pabedan
 Township, Yangon ☎ 01-241001-20

CHATRIUM

MAP P19-D3
 No.40, Natmauk Road, Tamwe Township,
 Yangon ☎ 01-544500 / 01-544244

CHERRY HILLS HOTEL

MAP P18-C2
 No.520/4 A, Kabar Aye Pagoda Road, Shwegon
 Daing, Bahan Township, Yangon ☎ 01-559722

CLOVER HOTEL

MAP P18-C3
 7/A, Wingabar Road, Bahan Township, Yangon
 ☎ 09-73177781-4

CLOVER CITY CENTER HOTEL

MAP P16-C2
 217, 32nd Street (Upper Block), Pabedan Township,
 Yangon ☎ 01-377200-1 / 01-378276 / 01-378274

CLOVER CITY CENTER PLUS HOTEL

MAP P16-C2
 No. 299, 32nd Street (Upper Block),
 Pabedan Township, Yangon

☎ 01-377975, 01-377976, 01-378685

EAST HOTEL

MAP P16-C2
 234-240, (1) Quarter, Sule Pagoda Road, Kyauktada
 Township, Yangon ☎ 01-371358 / 09-73135311

EASTERN HOTEL

MAP P17-E2
 No.194/196, Bo Myat Htun Street, Pazundaung
 Township, Yangon ☎ 01-293815 / 01-293168-9

GRAND LAUREL HOTEL

MAP P17-E2
 No.153/159, Bogyoke Aung San Road, Botahtaung
 Township, Yangon

☎ 01-398771 / 01-298986 / 01-296209

HIGH FIVE HOTEL

MAP P14-C1
 No. 35, Thiri Kan Thar St, North Okkalapa Township,
 Yangon, ☎ 01-691900, 01-691885, 01-691698

HOTEL 51

MAP P17-E2
 No.154/156, 51st Street (Upper Block),
 Pazundaung Township, Downtown Yangon, Yangon
 ☎ 01-293022, 01-294460

HOTEL ESTA

MAP P16-A2
 No.19/20 Bogyoke Aung San Road,
 Bahosi Compound, Lanmadaw Township, Yangon
 ☎ 01 223 701 / 01-223702/01-223703

HOTEL GRAND UNITED (AHLONE BRANCH)

MAP P15-B6
 No. 35, (Corner of Hinin Si Gone Road, Front of Central
 Women Hospital), Min Ye Kyaw Zwa Rd, Yangon
 ☎ 01-391070

HOTEL GRAND UNITED (Chinatown)

MAP P16-B2
 No. 621, Mahabandoola Road (Corner of
 Bo Ywe Street), Latha Township, Yangon
 ☎ 01-372256/01-372257/01-372258

HOTEL KAN KAW

MAP P15-B6
 No.93(A), Hinin Si Gone Road, Ahlone Township, Yangon
 ☎ 01-228566 / 01-2301700

INYA LAKE HOTEL

MAP P14-C3
 No.37, Kaba Aye Pagoda Road, Yangon
 ☎ 01-9662866 / 01-9662857-9

KANDAWGYI PALACE

MAP P18-C3
 Kan Yeik Tha Road, Mingalar Taung Nyunt
 Township, Yangon ☎ 01-249255

MICASA HOTEL

MAP P14-C3
 No.17, Kaba Aye Pagoda Road, Yankin
 Township, Inya Lake, Yangon ☎ 01-650933

MYANMAR LIFE HOTEL

MAP P14-B1
 No.41, Radio Station Road, Mingalardon, Yangon
 (Near Yangon International Airport)
 ☎ 01-664135, 664939, 661820 664483

PANDA HOTEL

MAP P16-A1
 205, Corner Of Wadan Street & Min Ye Kyaw
 Swar Road, Lanmadaw Township, Yangon
 ☎ 01-212850-2 / 01-229358 / 01-229360-1

PARK ROYAL

MAP P16-C1
 33, Alan Pya Phaya Road, Dagon Township, Yangon
 ☎ 01-250388

ROSE GARDEN HOTEL

MAP P15-C5
 171, Upper Pansodan Road, Yangon, Myanmar
 ☎ 01-371992/09-421131606

SAVOY HOTEL

MAP P18-B3
 129, Corner Of Dhammazedi Road & Inya Road,
 Yangon ☎ 01-526289 / 01-526298 / 01-526805

SEDONA HOTEL

MAP P18-C1
 No.1, Kaba Aye Pagoda Road, Yankin Township,
 Yangon ☎ 01-8605377

THE STRAND YANGON

MAP P17-D3
 No.92, Strand Road, Yangon, ☎ 01-243377

SULE SHANGRI-LA

MAP P16-C2
 @Renamed : Old TREDERS (Traders)
 No.223, Sule Pagoda Road, Kyauktada Township,
 Yangon ☎ 01-242828

SUMMIT PARKVIEW HOTEL

MAP P15-B5
 350, Ahlone Road, Dagon Township, Yangon
 ☎ 01-211888 / 01-211966

VINTAGE LUXURY YATCH HOTEL

MAP P15-C6
 No.6, Botahtaung Jetty, Botahtaung Township
 Yangon, ☎ 01-9010533 / 01-9010999

SPORT

GOLF

CITY GOLF CLUB

MAP P14-A1
 Thirimingalar Street, 10Miles, Insein Township-
 Yangon ☎ 09-30090884 / 09-421119932
 ☎ 5:30-18:00 (Open Daily)

PUN HLAING GOLF CLUB

MAP P15-A4
 Pun Hlaing Golf Estate Avenue, Hlaing Tharyar
 Township, Yangon ☎ 09421042679
 ☎ 01-684020-4 ☎ 6:00-15:00 (Closed on Mondays)

YANGON GOLF CLUB

MAP P14-A1
 Da Nyin Gone Golf Course, Insein Township, Yangon
 ☎ 09-73254835
 ☎ 6:00-18:00 (Reservations required Monday holiday
 Saturdays, Sundays and holidays only play)

ROYAL MINGALARDON GOLF & COUNTRY CLUB

No.3 Main Road, Mingalardon Garden City,
 Mingalardon Township, Yangon.
 ☎ 09 449 222222, 01 639446, 098636395
 ☎ Every Tuesday to Sunday (6:00 a.m - 6:00 p.m.)

MYANMAR GOLF COURSE

MAP P14-B2
 9 Mile, Pyay Road, Mayangone Township, Yangon
 ☎ 09 32161224
 ☎ Every Tuesday to Sunday (5:30 a.m - 4:00 p.m.)

OKKALA GOLF COURSE

MAP P14-C3
 Corner of Wai Za Yan Tar Road & Parami Road,
 Mayangone Township, Yangon
 ☎ 09 420071705 ☎ 5:00-17:00 (Open Daily)

Soccer

ALBIREX NIGATA MYANMAR SOCCER SCHOOL

MAP P18-C3
 No.64(B), Room, B-4L, Shwe Gon Plaza,
 Bahan Tsp, Yangon, ☎ 01- 540096 / 09-971971427

COFFEE / FAST FOOD

ACACIA TEA SALON

MAP P18-C1
 No.52 Saya San Road, Bahan Township, Yangon
 ☎ 01-554739, 0973115812 ☎ 10:00-22:00 (Daily)

Daren Bread Café

MAP P16-C1
 No(57-A), Yawmingyi Street, Dagon Township,
 Yangon ☎ 09-253522048 ☎ 9:00-21:00 (Open Daily)

FRESHNESS BURGER

MAP P16-C1
 No.18/D Nawwady Road, Dagon Township
 ☎ 01-375900 ☎ 9:00-21:00

Hill's Cafe

MAP P16-C1
 Prime Hill Business Square
 ☎ 09-43157213 ☎ 8:00-18:00 (Sat,Sun Off)

LA VIE EN ROSE

(1) MAP P18-A3
 No.136, Bargayar Road, Sa Ya Tun Street Corner,
 Sanchaung Township, Yangon
 ☎ 01-503373 ☎ 10:00-20:00 (Open Daily)

(2) MAP P18-B1

No(78-D), Inya Road, Kamaryut Township, Yangon
 ☎ 09-31262648 ☎ 10:00-20:00 (Open Daily)

(3) MAP P18-B1

(Cafe ON THE WAY) No.121-E, Than Lwin Road,
 Kamaryut Township, Yangon
 ☎ 09-250988271 ☎ 9:00-21:00 (Open Daily)

LOTTERIA

(1) Junction Square Branch MAP P18-A2
 ☎ 8:30-22:00 (Open Daily)

(2) Pearl Condo Branch MAP P18-C2
 ☎ 8:00-22:30 (Open Daily)

(3) China Town Branch MAP P16-A2
 ☎ 8:00-22:30 (Open Daily)

(4) Junction 8 Branch MAP P14-B2
 ☎ 9:00-22:30 (Open Daily)

(5) Tamwe Ocean Branch MAP P19-D2
 ☎ 9:00-22:30 (Open Daily)

(6) Kyauktada Branch MAP P19-D2
 ☎ 9:00-22:30 (Open Daily)

TATEGOTO

MAP P18-A3
 No.81 Mingalar Street, Between (East) Kone Street &
 Padonma Street, Yangon ☎ 09-5072440 / 01-504834
 ☎ 8:00-18:00 (Closed on Thursday)

BAR NIGHTSPOT

50th Street Cafe Restaurant & Bar

MAP P17-E3
 No.520, (A 3/4), Kabaraye Pagoda Road,
 Shwe Gon Daing, bahan Township, Yangon
 ☎ 01-8603045 ☎ 24 Hours (Daily)

KO SAN DOUBLE HAPPY BAR

MAP P16-B2
 No.108, 19th Street, Latha Township, Yangon
 ☎ 01-503232

PWINT THIT SANN

MAP P18-C3
 No.520, (A 3/4), Kabaraye Pagoda Road,
 Shwe Gon Daing, bahan Township, Yangon
 ☎ 01-8603045 ☎ 24 Hours (Daily)

Union Bar & Grill

MAP P17-D3
 No.42 Strand Road, Yangon
 ☎ 09-31018272 ☎ 10:00-1:00 (Daily)

VISTA BAR

MAP P18-C3
 No.168, Corner of Shwegondine Road and
 Yaedanshay Road, Bahan Township, Yangon
 ☎ 09-51559481 ☎ 17:00-25:00 (Open Daily)

WINE BAR MARU

MAP P16-B2
 No.130 Ground Floor, Shwe Taung Tan Road,
 7 Quarter, Lanmadaw Township, Yangon
 ☎ 01-1221568 / 09-420308350 ☎ 18:00-24:00 (Daily)

SOUVENIR

BIJIN

MAP P18-A3
 77, Min Street, Sanchaung Township, Yangon
 ☎ 01-519001 / 09-5027390 ☎ 11:00-21:00 (Sunday off)

K&K

MAP P17-E2
 No.99 GF, 49th Street, Pazuntaung
 Township, Yangon
 ☎ 09-32221481 / 09-254070580
 ☎ 9:00-17:00 (Open Daily)

Select Boutique the Thiripitsaya ~jewels & textiles

MAP P18-B2
 Sakura Residence, No.9 Inya Road, Kamaryut
 Township, Yangon, Myanmar
 ☎ 01-525001 ☎ 10:00-18:00 (Tuesday off)

SHINON

MAP P16-C2
 No.5/6 East A-block, Bo Gyoke Aung San Market,
 Yangon, Myanmar
 ☎ 09-420263133, 01-653456, 01-650665 (Ext 812)
 ☎ 9:00-17:00 (Monday Off)

Beauty, health

Spa sauna

GOLDEN PARK

MAP P14-D2 (Outside Right)
 National Sports Complex, Pin Lon Road, North Dagon
 Township, Yangon
 ☎ 09-254263991 ☎ 8:00-26:00 (Open Daily)

Myanmar Japon Real Estate -

The No. 1 source of real estate information in Myanmar

Nearest shopping destination Nearby Japanese restaurant

01 **3LDK** **3,700,000**
Area140m² Ks/ Month

New Building, High Class Decoration, with Furniture and Electric, Including Internet

RUBY MART
JAPAN JAPAN



Dagon Township

~Floor/~Building Floor 1/8Floor Building

Elevator

02 **3LDK** **4,500,000**
Area130m² Ks/ Month

Fully Furniture and Electric appliances, Including Internet, Building Generator.

RUBY MART
JAPAN JAPAN



Dagon Township

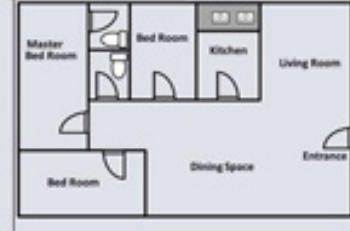
~Floor/~Building Floor 3/8 Floor building

Elevator

03 **3LDK** **4,500,000**
Area200m² Ks/ Month

High Class Condo on Pyay Road, 10 minutes walk from Inya Lake, Including Pool and Gyms.

Shwe Hintha Market
Little Tokyo



Hlaing Township

~Floor/~Building Floor 5/13 Floor Building

Elevator

04 **3LDK** **4,000,000**
Area270m² Ks/ Month

Including Branded Furniture, in front of Hotel Kan Kaw, Including Pool and Gyms

TAW WIN CENTER
KAMAKURA



Ahlon Township

~Floor/~Building Floor 2/8 Floor Building

Elevator

05 **3LDK** **4,000,000**
Area160m² Ks/ Month

The room with Nice Decoration, Fully Furniture and Electric appliances.

9-mile OCEAN
Nagasaki-ter



Mayangone Township

~Floor/~Building Floor 6/22 Floor Building

Elevator

06 **3LDK** **3,000,000**
Area130m² Ks/ Month

Shwedagon Pagoda View, New Building, Fully Furniture and Electric appliances.

PRO-MART
HARU



Bahan Township

~Floor/~Building Floor 11/12 Floor Building

Elevator

We will find the best rental house for your stay or office !!

Please Contact to Ms. Mihara or Ms. Su for free to discuss further.

Myanmar number: **09-3101-9178**

Email: **info@myanmarjapon.com**

MYANMAR JAPON
Real Estate DIVISION (MIRC Co., Ltd.)

Register Number of MRESA 2894
(Myanmar Real Estate Service Association)
We work with you to secure the best contracts and provide thorough follow-up services.

** We provide a wide range of services including office rental, tenant management, serviced apartments, and factory and land leasing.

MYANMAR JAPON

FIND



**From Yangon
to Tokyo**
Same fare to Osaka,
Nagoya and Fukuoka!

USD 710~

**+USD80/Oneway to
other destinations in Japan!**

- Above fares are excluding applicable taxes and surcharges/fees.
- Fares shown are subjected to change without prior notice.
- Above fares are as per exchange rate as per on 09 March 2015.

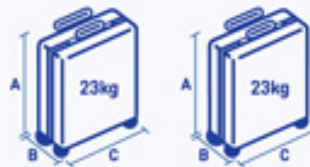
Schedule (29 MAR 15 - 24 OCT 15)

*Flight schedule is subjected to change without prior notice.

Fright	Departure	Arrival	Fright	Departure	Arrival
NH814	YANGON 21:45	6:50*1 TOKYO (NARITA)	NH813	TOKYO (NARITA) 11:00	15:40 YANGON

**Economy Class
Baggage
Allowance
Rule**

*For tickets issued on/after 8 JAN 15.



**2 Baggages
for FREE!!**

A + B + C ≤ 158cm (62 inch) *Including any wheels and handle(s)
*Additional charges will apply for baggages which do not meet ANA's baggage limitations (size and weight).

For more information, visit us at www.anaskyweb.com,
call ANA Yangon Office (Tel: 01-255-412/13) or call your travel agency.
Yangon Office Business Hours: 9:00-17:00/Closed on Saturday, Sundays and public holidays.



KONICA MINOLTA

bizhub C224e

A Total Solution for Your Business Needs

SECURITY



- User Authentication
- Account Tracking by User and Department
- Secured & PW Printing
- IC Card Authentication*
- Biometric Authentication*



PRINTING

- Duplex Printing
- Direct Printing from USB, Web Browser, iPhone / iPad , Android
- Direct USB Printing of Word, Excel, PDF, JPEG
- Print up to 300gsm thickness
- Banner Printing up to 1.2m (47 inches)
- Booklet Printing



WIRELESS

- Wireless Printing from iPhone, iPad, Android
- Wireless Printing from Laptops
- Cloud Connections to Google Apps, Evernote and SharePoint



STORAGE

- 250 GB Storage
- Personal User Box Storage



SCANNING

- Scan to USB, Computer, Email, User Box, Server, Cloud
- Scan documents into PDF, Compact PDF, PPTX, TIFF, JPEG, Word*, Excel*
- Single-Pass Dual-Scan*
- Text Recognition with OCR Function*

* OPTIONAL



Giving Shape to Ideas

Roger Kay

Solutions Consultant
rogerkay@gandamar-mm.com
Direct Tel: +95 9510 7558



Thida

Key / Japanese Account Executive
thida@gandamar-mm.com
Direct Tel: +95 9765 23441



Authorized Distributor:

GANDAMAR

O.A. & Business Solutions (Since 1951)

YANGON - No. 18-24, Kun Gyan Road, Aung San Stadium Bldg (S). Ph : 01- 383932, 383934

NAYPYITAW - No.166, Thiri Yadanar Shopping Complex. Ph : 067- 421212

MANDALAY - i plaza - Manmyanmar Plaza 2nd Floor, 84th Road, Ph : 02- 4000098, 4000099

Email: marketing@gandamar-mm.com , hq@gandamar-mm.com

www.facebook.com/ gandamar.mm