

Published by registration no. 1017611 မြန်မာ့အသံ 04961 မြန်မာ့အသံ

Business and Lifestyle information in Myanmar

MYANMAR **+** PLUS JAPON

11
2014 NOV

**TAKE
FREE**

Top Interview

Special Interview with
Deputy Minister, Ministry of Culture
DAW SANDAR KHIN

Special Feature

Let's Golf in Yangon!
Special
YANGON CITY MAP



Sharp eyes on energy conservation



The Fuji Xerox ApeosPort-V series combines energy-saving efficiency with outstanding user convenience. Our proprietary Smart Energy Management technology monitors the control panel, controller, scanner, and printer components, reducing electricity consumption and CO² emissions by delivering power only to the components that actually need it. What's more, eco-friendly performance is further enhanced by an improved IH fuser that draws no power in standby mode, yet is ready to print in just 3.1 seconds*. Wait time is also reduced by Smart WelcomEyes, a unique dual sensor system that detects your approach and activates the control panel in just 2 seconds.

The Fuji Xerox ApeosPort-V series — it's a no-compromise solution for maximum energy savings and user convenience.

*In copying mode, on ApeosPort-V C3375/C2275

Revolutionizing the way offices work

ApeosPort-V C7775 / C6675 / C5575 / C4475 / C3375 / C2275

Fuji Xerox provides Global Quality Support locally in Myanmar.

Fuji Xerox has established its business operations in Myanmar to serve our customers better here.

Having set up our local presence, we have Fuji Xerox direct sales representatives & specialized engineers to provide prompt support and quality service in offering our products and solutions to meet your business needs.

For more information, please contact a Fuji Xerox sales representative now.

Shinichi Kimura
木村伸一

Sales & Marketing Manager (Yangon Resident)
E-mail shinichi.kimura@mnr.fujixerox.com
Mobile 0931-659-813 (Weekdays 9 a.m. – 5 p.m.)



Kazuhiko Kiji
木地和彦

Global Account Sales (Yangon Resident)
E-mail kazuhiko.kiji@mnr.fujixerox.com
Mobile 0925-443-2319 (Weekdays 9 a.m. – 5 p.m.)



日本語でもお気軽にご連絡ください。

Fuji Xerox Co., Ltd. www.fujixerox.co.jp/

Xerox, Xerox and Design, as well as Fuji Xerox and Design are registered trademarks or trademarks of Xerox Corporation in Japan and/or other countries and are used under license.

Fuji Xerox Asia Pacific Pte Ltd (Myanmar Branch) www.fxap.com.sg/

#517, 5th Floor, Hledan Center, Corner of Pyay Road & Hledan Road, Kamaryut Township, Yangon, Union of Myanmar TEL 01-2305-624/625

FUJI XEROX



Bagan Thiripyitsaya Sanctuary Resort Bagan, Myanmar



Sales & Reservation Office Yangon

Room No.0505, 5th Floor,
Sakura Tower, Bogyoke Aung San Road,
Kyauktada Township, Yangon

Tel: (95 1) 255333, 255255

Fax: (95 1) 255258

Email: thiri@myanmar.com.mm
smmthiri@myanmar.com.mm

www.thiripyitsaya-resort.com

Landmark on the Irrawaddy, Bagan's timeless cultural heritage resounding, majestic panorama, dramatic sunrise and golden sunset, verdant gardens, indulgent luxury, gracious and warm hospitality, luscious cuisine, rejuvenation of the body, utter peace and serenity sanctuary for the spirit.

MYANMAR⁺plus JAPON

ISSUE 3 November 2014

Contents

NEWS

6 | Business News Digest

FEATURES

8 | Special Feature Let's Golf in Yangon!

10 | Top Interview Myanmar's first World Heritage Site ... The person who made it happen

SPECIAL MAPS

12 | Yangon City Maps

18 | Hot News

Useful Information

17 | Cuisines, Hotels, Entertainment, Shopping

Owner - Yutaka Nagasugi
Company - Myanmar Japon Co.,Ltd
No(70), Natmauk Lane Twe (1),
Bahan Township, Yangon. 01-8604301(Ext.101)

Company
Registration No. 138FC/2013-2014
Editor in Chief - Kyaw Kyaw Thant
Editors - Shuichi Kondo, Hiroyuki Okada, Kyaw Zin Htun, Ei Ei Chaw,
Mayumi Mihara, Chaw Su Win Maung, Sithu Aung
Su Myat Hnin, Thinzar Wint Htel ,Phone Myint Min

Publisher
Daw Tin Tin Aye
(Ywat Sein Sar Pay)
No(43), 4 street,
Lanmadaw Township,
Yangon
Registration No 04961



MYANMAR⁺plus
JAPON

MEDIA DATA

First issue September 1st, 2014,
Appearance A 4, saddle stitch,
24 pages, Full color
Circulation 18,000 Copies
Price Free of charge
Printing Aung Thein Thann Offset
No(136), 3 ward, Bogyoke Aung San Road,
Panadaung Township, Yangon.

『Myanmar Japon』 Monthly Japanese magazine in Myanmar

Business and Lifestyle information
on Myanmar for Japanese people



Business news digest, Teachings of a
Myanmar expert, Myanmar hot news,
Myanmar Japon special Yangon Map, hotels,
restaurants, and Key contacts, Jobs
information, Housing Information....

20th day of every month
you can get Myanmar Japon
magazine

Tel: 09-31019178
<http://myanmarjapon.com>

Business News Digest



Nippon Express starts operations in Myanmar

Nippon Express recently started operations in Myanmar and held a launch party in Yangon on October 6 at the Sule Shanghi-La Hotel. The party was well attended by local branches of the company's Japanese customers, industry related companies, and the media. The President and CEO of the Japanese main office, Mr. Kenji Watanabe gave the opening speech.

Nippon Express set up a Yangon office in 2012. Since then, the number of Japanese companies expanding into Myanmar has more than tripled and the importance of logistics is increasing rapidly. As a global logistics company, Nippon Express plans to offer high value add services.



Toyota to sell new car models

The General Manager of Toyota's officially recognized service center TTAS Co. Ltd, Mr. Myo Myin Thein, announced that they would start selling 6 of Toyota's models including Land Cruisers. They are left-sided cars and the price is US\$117,000 for a Camry, US\$166,000-199,000 for a Land Cruiser, and approx.US\$35,000 for a Corolla. These cars are targeting Toyota fans looking to buy a new car.

On September 16 in Yangon at the Sedona Hotel, Toyota held a ceremony inviting major customers, related companies, and representatives from finance and media. The GM of Toyota Motors Asia Pacific, Mr Seiji Kai, the GM of TTAS Co., Ltd Mr. Myo Myin Thein, and the Managing Director Mr. Ryoji Fujita discussed their ambitions for growing Toyota's business. When choosing the types of cars to sell, Mr. Fujita commented "We fully considered the conditions of driving in Myanmar" showing the company's strong presence in the Myanmar market. Toyota currently has 2 service centers in Yangon.



Given Myanmar's expanding market place, Toyota is looking to open service centers in Mandalay and Naypyidaw.



The new MPT announces its strategy; Launches aggressive SIM card sales

On September 12th at the Chatrium Hotel in Yangon, the government-run MPT (Myanmar Post and Telecommunications) which is revamping its communications infrastructure and business systems with its joint venture partners KDDI and Sumitomo Shoji, held a press conference to unveil its new logo, slogan and customer interface. Over 300 guests including related companies, clients and the press attended the event.

At the press conference, MPT's new brand concept of "Moving Myanmar Forward" was unveiled. They emphasized connecting people to people, information to information, and country to country with the approach of "One touch, limitless possibilities". They also showed their refreshed image with a new logo, updated website, and facebook page.

In addition, they announced their goal of achieving 50% market share by year end through selling 5 million SIM cards at 1,500 Ks each and 75-80% market share by the end of next year (March 2016).

Under Myanmar's telecom liberalization policy, Ooredoo from Qatar and Telenor from Norway are expanding, and stiff competition is expected in the sector.



Myanmar awards foreign bank licenses 3 Japanese banks selected

On October 1st, the Myanmar government announced the results of the selection process for deciding foreign bank licenses, and 3 Japanese mega banks were awarded licenses – Mitsubishi-UFJ, Sumitomo-Mitsui, and Mizuho.

Including the 3 Japanese banks, there were 9 licensees including 2 from Singapore and 1 each from China, Thailand, Malaysia, and Australia.



Panasonic's latest camera unveiled in Myanmar

On September 16, Panasonic unveiled its latest "High Performance Compact 4K Camera" at its new product launch at the Sule Shangri-La Hotel in Yangon.

"We are unveiling this product because we want Myanmar to be using the same latest camera technology as users around the world" said Panasonic Asia Pacific Myanmar Branch Manager Mr. Hisakazu Maeda. There are 4 models of this camera and it can jointly operate with smart phones and can take panorama shots and videos with twin camera functionality. It is being imported and sold by Advance Vision Co., Ltd.

The camera will be available across Myanmar in shops and supermarkets and at Advance Vision show rooms in Yangon and Mandalay.



Japan and Myanmar SME support "Business matching" event

"Economic development won't happen without promotion of Small and Medium Enterprises". Based on this concept, on October 2-3, the Japan Myanmar Association and UMFCCI hosted an event at UMFCCI in Yangon for "SME Business Matching" with 17 Japanese companies and around 70 Myanmar companies participating.

There was a wide range of companies including IT, wholesale, environmental, welding, food, and auto parts. The participants set up booths to look for business partnerships.

The opening ceremony addresses were made by U Win Aung, Chairperson of the Union of Myanmar Federation of Chambers of Commerce and Industry (UMFCCI) and Mr. Hideo Watanabe, Chairperson of the Japan Myanmar Association. Mr. Watanabe stated his vision, "Japan wants to play its part in the development of Myanmar's SME sector." He gave policy recommendations, "To develop Myanmar's SMEs, you need an administrative system which makes it easy for SMEs to conduct business. You need to set up a Ministry of SMEs and be serious about promoting the sector." After the ceremony, Mr. Watanabe was surrounded by media asking about many themes such as the development of Thilawa SEZ and Japan-Myanmar economic cooperation.

This was the second Business Matching event sponsored by UMFCCI and Japan with the first being held last year. Last year there were 12 companies from Japan and many of them successfully formed partnerships with local companies.



The first Toyota Mekong Club Championship

As part of Toyota Motor Corporation's contributions to the Mekong region, they decided to sponsor a soccer event popular with the youth. The company's local subsidiary Toyota Motor Asia Pacific (TMAP) will sponsor the "Toyota Mekong Club Championship" on October 31st and November 2nd in Binh Duong on the outskirts of Ho Chi Minh.

Four club champions from national leagues in Myanmar, Vietnam, Laos, and Cambodia will compete for the title of Mekong Champion. It is the first time for this event, and the prize money will be US\$75,000 for 1st place, US\$50,000 for 2nd place, US\$30,000 for 3rd place, and US\$10,000 for 4th place.

Myanmar will be represented by Ayeyawady United F.C., and the invitation ceremony was held on September 21st at Yangon's Thuwunna Stadium. The Managing Director of TTAS, Mr. Ryoji Fujita (see picture) presented the invitation to the club team. TTAS is a local joint stock company formed in Myanmar between Toyota Tsusho and U Aye Zaw. Ayeyawady plays the Laos team on October 31st at 4:30pm.

Next year, a team from Thailand is expected to join the tournament.

URL: Toyota Mekong Club Championship
<http://toyotamekongfootball.com>





Special Unknown golf paradise

Let's Golf in Yangon !

As an ex-British colony, golf is thriving in Yangon. There are frequent golf tournaments. For a Southeast Asian country, Yangon has a relatively large golfing community and the green fees are reasonable. It's a great place for golf lovers. For this special article, we introduce golfing in Yangon based on the research of Japanese golfers living in Yangon.

A popular sport with over 100 years of history in Myanmar

Myanmar has had the game of golf for the longest of all the Asian countries. The oldest course was built in 1887 at the Officers Academy in Thayet Golf Club in Magwe near Aung Lan and it is still active today. In Yangon, the popular Yangon Golf Club was established in 1909 and has over 100 years of history.

Golf lovers are not only from the wealthy class, but also many from the middle class and green fees for locals are only 5,000-10,000Ks. Foreigners are charged a higher fee, but it is still a good deal if you compare with prices in Japan. But unfortunately, there are some courses with poor maintenance. But there are many ex-pats who have learned to enjoy the charms and challenges of such courses. If you come to Yangon, you should definitely try golf "Myanmar style".

Myanmar golf is different because...

Golf courses in Myanmar are different to those in Japan in various ways. Here are some of the key differences based on the views of Japanese golfers in Myanmar.

Point 1

Myanmar courses are nearby!

If you go any direction from Yangon, you will find a golf course not far from the city.

It's nice to take it easy in the morning when you play

You can do a round in the morning before your flight.

Point 2

Myanmar courses are big!

Many courses are much bigger than those in Japan. The courses using lakes and rivers are impressive.

It feels like there are fewer bunkers because there is so much water.

You won't hit so many out-of-bounds, but you'll often lose balls.

Point 3

Myanmar courses are cheap!

For courses with superior facilities, the prices are comparable to Japan, but most courses are extremely good value for money.

I'd be happier if I could just pay local fees...

In my old age, I would like concentrate on my golf in Yangon.

How do golfers cope with the rainy season?

Enjoying the rainy season

As part of Southeast Asia, Myanmar has a strong rainy season. On some courses, the greens become pools of water. We asked how do ex-pat golfers enjoy the rainy season?

The majority responded "We choose courses with a reputation for good drainage", but there were also some who said "We choose cheap golf courses, and if it rains during our play we just stop". With cheap green fees, there are many ways to enjoy golf in Myanmar. Some brave golfers even claim "I play in the rain to experience the new sport of Water Golf".



Courses with relatively good drainage during rainy season

ပန်းလှိုင် ဝေါက်ကွင်း

Pun Hlaing Golf & Country Club



Pun Hlaing Golf Club is a part of a high quality golf and residential estate in Yangon. The course was designed by the great South African "Master" Gary Player. It is the most popular course for Japanese visitors in Yangon and is played by many celebrities and diplomats. The green fees are similar to Japan and are reasonable considering the excellent club house facilities and well maintained course.

If you are coming from downtown the road to the estate can get congested so ensure you have plenty of time. Security is first class as you

18 holes, 7012 yards	
Green fee	Weekdays 65,000Ks Weekends/holiday 90,000Ks
Caddy fee	5,000~10,000Ks
Electric golf cart fee	25,000~35,000Ks
Club rental fee	25,000~33,000Ks

would expect from a course set in Yangon's most prominent residential estate.

Club: Pun Hlaing Golf Estate Road, HlaingTharYar Township, Yangon
Ph: 01-684021 / 01-684020
www.PunHlaingGolfEstate.com

The newest club with beautiful views

ရွှင်ရယ် မင်္ဂလာဒုံ ဝေါက်ကွင်း

Royal Mingalardon Golf & Country Club

Opened in 2010, it is Yangon's newest golf club. Its hotel and stylish luxurious club house make it a leader in comfort.

Its wide greens and lake view from the cafeteria give it a resort-like feel. The course is flat so advanced players may find it simple, but for less-experienced players it is pleasant to play. We recommend it as place to make your golfing debut in Myanmar.



18 holes, 7,000 plus Yards	
Green fee	Weekdays 25,000Ks Weekends 40,000Ks Tuesdays 15,000Ks
Caddy fee	3,500Ks
Electric golf cart fee	20,000Ks
Club rental fee	30,000~35,000Ks

Club: No.3 Highway, No.1 Mingalardon Garden City, Mingalardon Township, Yangon
Ph: 01-679445 / 09-8636395 / 09-44922222
(Closed on Monday)
<http://www.royalmingalardongolf.com>

A golf course with convenient access in the middle of the city

မြန်မာ ဂေါက်သီးရိုက် အသင်း Myanmar Golf Club



This course is located not far from the heart of the city in the 9 Mile area so access is very convenient. The course has a long history since the British colonial period, and in 1947 it was renovated. While the facilities are old, they are well maintained and the course is packed with local players during the rainy season. Japanese account for about 30% of the players and the view of the pagoda from the green is popular. Many consider the 18th hole as challenging and interesting.

18 holes 6576 yards	
Green fee	25,000Ks (Weekdays) 30,000Ks (Weekends) 15,000Ks (Friday)
Caddy fee	10,000Ks
Electric golf cart fee	20,000Ks
Club rental fee	15,000~20,000Ks

Club: Myanmar Golf Club, 9 mile, Pyay Road, Mayangone Township, Yangon
Ph: 09-32161224

Very popular for its strategic course design

အသင်းကုန်း ဂေါက်ကွင်း Yangon Golf Club

With over 100 years since its establishment, it is a very prestigious club which hosts many international events. You will never get bored with the course structure and will enjoy the different features of each hole. The course is very popular with residents. Although the club house is old, many feel that the course design makes up for it. Also, it is known for its many high quality male caddies and they can designate your favorite caddy to you each time you play.



18 holes 7200 yards	
Green fee	35,000Ks (Weekdays) 40,000Ks (Weekends)
Caddy fee	10,000Ks
Electric golf cart fee	20,000Ks
Club rental fee	15,000~20,000Ks

Club: KhaFae Pin Road, Da Nyin Gone Ward, Insein Township, Yangon
Ph: 01-635563 / 09-73254835
www.yangongolfclub.com

A city course to relax and enjoy golf

ညွှောင်းလှာ ဂေါက်ကွင်း Okkala Golf Resort

Practically in the center of the city, this course is very conveniently located. It was opened during the military regime and the military manages the golf course so it has many dignitaries playing there. The restaurant serves Rakhine food. Some golfers comment that the greens are less well cared for than other courses, but the location and price are attractive. It's good if you want to slip in a quick round of golf during your spare time. There is a driving range next door, and many people just use that.



9 holes 3408 yards (After renovations are complete in November, 18 holes are planned)	
Green fee	22,000Ks
Caddy fee	5,000~8,000Ks
Electric golf cart fee	NONE
Club rental fee	15,000~30,000Ks

Club: Corner of Gandamar Road & Waizayandar Road, South Okkalapa Township, Yangon
Ph: 09-420071705



One round of golf before you fly back?

မြို့တော်ဂေါက်ကွင်း Yangon City Golf Resort



Abbreviated as "YCDC". In 1994 the Ngwe Thaw Tar (Silvery) course was opened, while 2 years later the Mya Kan Tha (Pondy) course was opened. The latter course requires an accurate shot, while the first course has wide fairways and is good for beginners. Many golfers comment that the grass is well taken care of. It is located just north of Yangon International Airport, and there are Japanese who play one round of golf before catching their flight back to Japan.



Club: ThiriMingalar Road, 10Miles, Insein Township, Yangon
Ph: 01-641342 / 09-421119932

36 Holes 7000 / 6208 Yards	
Green fee	36,000Ks (Weekdays) 57,000Ks (Weekends)
Caddy fee	14,000Ks
Electric golf cart fee	30,000Ks
Club rental fee	30,000~40,000Ks

Enjoy destination golfing!

Information on golfing at tourist spots

Myanmar's number 1 resort Inle Lake



Aye Tha Yar Golf Resort

With year-round cool temperatures, it's a 15 minute drive from Taunggyi, the main town of Inle Lake.

Club: Aye Tha Yar, Taunggyi, Shan State
Ph: 081-24245 / 081-208005

In Myanmar, there are many golf courses in the regions. All of them have very reasonable fees. We list the golf courses at areas with many Japanese tourists.

Previously the British colonial summer retreat



Pyin Oo Lwin Golf Course

Chilly morning golf on the cool plateau.

Course 18 holes, 7310 yards

Club: Center Road, Pyin Oo Lwin, Mandalay
Ph: 085-22382

Where eternal time flows Historic heritage city Bagan



Bagan Golf Resort

Located next to Bagan Golf resort hotel and some of the holes play among the pagodas.

Club: Old Bagan, Nyaung Oo Township, Mandalay
Ph: 09-2005850 / 09-30108113

Poppa Golf Club

Near the sacred Mt. Poppa. Course is free for Poppa Mountain Resort guests.

Club: Poppa Mountain, Kyik Fadaung Township, Mandalay Ph: 09-33629431 / 09-255174640

Visit the palace and then play a round of golf in Mandalay



Yay Ta Gun Taun Golf Club

From Mandalay, located in the plateau around 30 minutes by car in the direction of Pyin Oo Lwin.

Club: No. 548, near Tet Ta Gone Taung Hill Road, Pathon Gyi Township, Mandalay Ph: 03-88751 / 09-792511289

Shwe Man Taung Golf Resort

From central Mandalay, a golf course located around 10 minutes by car in the Mandalay Hill.

Club: Mandaya Road, Aung Mye Thar Zan Township, Mandalay Ph: 02-73899

Top
Interview

Teachings of a Myanmar Expert

In this section, MYANMAR JAPON's Mr. Nagasugi interviews Myanmar's leading personalities to uncover the realities of "Today's Myanmar".

Myanmar
Ministry of Culture
Deputy Minister
Daw Sandar Khin

Myanmar's first World Heritage Site ... The person who made it happen

This month's theme:



Daw Sandar Khin

Myanmar Ministry of Culture

Ms. Khin is Deputy Minister of Ministry of Culture. She was born 1961 and worked for Ministry of Culture in various capacities since 1994. She has extensively researched chemistry, relic preservation, and archaeology and worked high positions as deputy Director General at the Department of Archaeology and National Museum then promoted as a Rector at the Yangon National University of Arts and Culture (Yangon). She was appointed Deputy Minister of Culture in 2011 when new government took office of the Republic of the Union of Myanmar. She is currently focusing on the conservation of tangible and intangible cultural heritage as well as awareness of heritage sustainability in Myanmar.

She was awarded the National Literary Award for her book entitled "Bagan Images of Mural Painting" by Myanmar Government in 2007 and has written numerous reports, articles and novels concerning the preservation of Myanmar culture heritage.

Pyu Ancient City Sites – Achieving World Heritage Designation

Nagasugi Today, I am very honored to meet with the talented Deputy Minister of Culture.

This summer, the Pyu Ancient City Sites were designated as World Heritage Sites. This achievement was a first for Myanmar. Tell us the background to attaining this designation.

Ms.Khin I am also honored to be here. I was very encouraged to see Myanmar Japon's September issue special coverage of the Pyu Ancient Cities.

We started working on the World Heritage Site application back in 2010. In 2011, we received USD30,000 from UNESCO and EUR400,000 from Italy to support our efforts.

After that, we at the Ministry of

Culture worked together with the Ministry of Science and Technology, Ministry of Education, architects from Myanmar architects association as well as engineer association to produce a report which we submitted to the World Heritage Committee last year.

This report was carefully reviewed by the International Council on Monuments and Sites (ICOMOS). Detailed surveys were conducted by ICOMOS experts by helicopter and on land in Hanlin (Sagaing Region), Beikthano (Magwe Region), and ThayeKhittaya (Bago Region).

Nagasugi I like Bagan and have been there many times. I heard there are 46 national heritage sites in Myanmar. Why do you think Pyu was recommended from amongst all these sites?

Ms.Khin When deciding what to recommend, the first sites I thought of were Hanlin, Beikthano, and Thaye Khittaya. These three cities span the approximately 1000 years when Pyu was at its height from the 2nd century BC to the 9th century AD. The sites are over 900 years earlier than the world famous Bagan sites.

A further distinguishing feature of these sites is that they fused the Theravada Buddhism from India with the local traditional culture. You can see the period reflected in the buildings, walls, and palaces; the metal objects made of gold, silver, copper; and the brick Buddha images and temple caves. Scholarship was also well developed, and

the city states were established with their own brick and metal production.

Also, many objects have been excavated with Pyu script and elaborate cremation urns and tombs have been discovered. We understand that they already had the custom of cremating their dead body and putting the bones in urns. High ranking palace official were put in stone urns, while common people were put in clay urns.

Behind the scenes of Myanmar's hard-fought success

Nagasugi While Pyu is a very attractive place, I understand that it was a tough road to attain the World Heritage Site designation. As with climbing Japan's Mt. Fuji, you must have experienced many stumbles and hardships.

Ms.Khin Actually, there was a high chance that Myanmar's application for Pyu as a World Heritage Site would be postponed at the 38th Session of the World Heritage Committee in 2014.

The ICOMOS investigation covered a wide range of topics including the accuracy of historical facts, the management of the sites, the maintenance of the old structures, the preservation of the gold and silver metal artifacts, and the effectiveness and appropriateness of the oversight systems.

Another topic investigated was

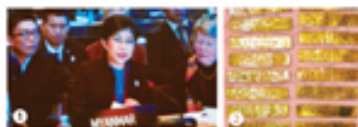
Continuing from Pyu! Working towards the next World Heritage Site designation...

Regarding the nomination of World Heritage Sites, I would like to point out that there are three types: Cultural Heritage, Natural Heritage, and Mixed Heritage. Myanmar signed the World Heritage Convention in 1972 to protect Myanmar heritage sites and pass them down to future generations.

Myanmar ratified this Convention in 1994. After ratifying this convention, in 1996, Myanmar applied for Bagan to be listed as a World Heritage Site, but it was not successful due to inadequate site preservation plans and capabilities. Since then, it has taken 20 years for the country to achieve its first designation – the recently granted Pyu Ancient Cities.

In Myanmar, there are 46 national cultural heritage sites taken care of by the Ministry of Culture and numerous natural heritage sites managed by the Ministry of Environmental Conservation and Forestry. Recommendations for World Heritage Sites are chosen from national

cultural heritage sites. In addition to Bagan, the World Heritage Sites candidate list includes nearby Mandalay's ancient city and wooden monasteries, Inle Lake, Bago, Mrauk-U, and Padalin Caves, amongst others. World Heritage Site status is meaningful and appreciated for Myanmar. It will accelerate tourist infrastructure development and tourism industry enhancement.



1 Deputy Minister of Culture Daw Sandar Khin at the World Heritage Site Convention

2 Pyu artifacts



At Yangon International Airport VIP Lounge

“Visitor Management” which evaluates if museums for foreign tourists have been set up, if clear and appropriate written explanations are available, if transport connections to the sites are good, if there are hotels, restaurants, and souvenir shops, and if locals are given job opportunities.

Before the opening of 38th Session of the World Heritage Committee, we went to Paris and met with the Committee members and ICOMOS representatives until they understood the situation.

Nagasugi You also appeared at this World Heritage Committee session, didn't you?

Ms.Khin Yes I did, on June 22, 2014 at the 38th Session of the World Heritage Committee, we finally received the decision on Pyu Ancient Cities. The site was recognized as a highly valuable and outstanding cultural heritage for Southeast Asia, and out of the 21 committee countries, 17 supported the designation including Japan, Qatar, Croatia, Colombia, Senegal, Germany, Philippines, and Vietnam.

Challenges for preserving a World Heritage Site

Nagasugi Pyu's recognition as a World Heritage Site will likely have a major impact on Myanmar's future development.

Ms.Khin Yes, it will have an impact. First, it is good for us to be able to share Myanmar culture with the world. Second, it will broaden local

people's experiences and perspective as touristic potential more increase than before. Third, job creation and local employment will increase and the site will provide the regional development.

Nagasugi I hope the economic benefits are shared by the local Myanmar people as well. To achieve that, there will be many challenges.

World Heritage Site status is meaningful for Myanmar. It will accelerate tourist infrastructure development.

Ms.Khin Yes it is, there will be many challenges. Along with designating this site as a part of the national cultural heritage, it is important that we need to maintain the site and conduct more research for the future, so that we can leave an inheritance of knowledge for the next generation.

To achieve that, first we need to formulate a site maintenance management plan. We also need to evaluate how to prepare for a natural disaster.

Nagasugi The designation as a World Heritage Site will have a magnetic effect attracting many visitors, so it will be urgent to build up tourist infrastructure.

Ms.Khin That is correct. In addition to improving transport links and providing guide information for tourist convenience, we also need to ensure that the valuable heritage sites are protected and not damaged by the increasing numbers of tourists.

Looking towards the next World Heritage Site

Nagasugi So, what are the next World Heritage Site candidates after Pyu?

Ms.Khin Well, one should be Bagan.

Nagasugi Bagan is one of the top 3 world Buddhist sites, along with Angkor Wat and Borobudur.

Ms.Khin To achieve World Heritage Site status for Bagan, we urgently need to fix the structures. Mrauk-U is another candidate, but we need to repair the site as well.

I am very interested in the techniques used to preserve old buildings in Japan. Previously, I took a 2 month course in Nara on heritage site preservation management. I also visited the culture research centers in Osaka, Kyoto, and Tokyo and participated in cultural heritage training sessions.

We are receiving technological support from Japan to help with our preservation management, and I believe the exchanges between our two countries will continue to deepen.

Nagasugi It is great that you can work together with Japan to attain future World Heritage Site designations.

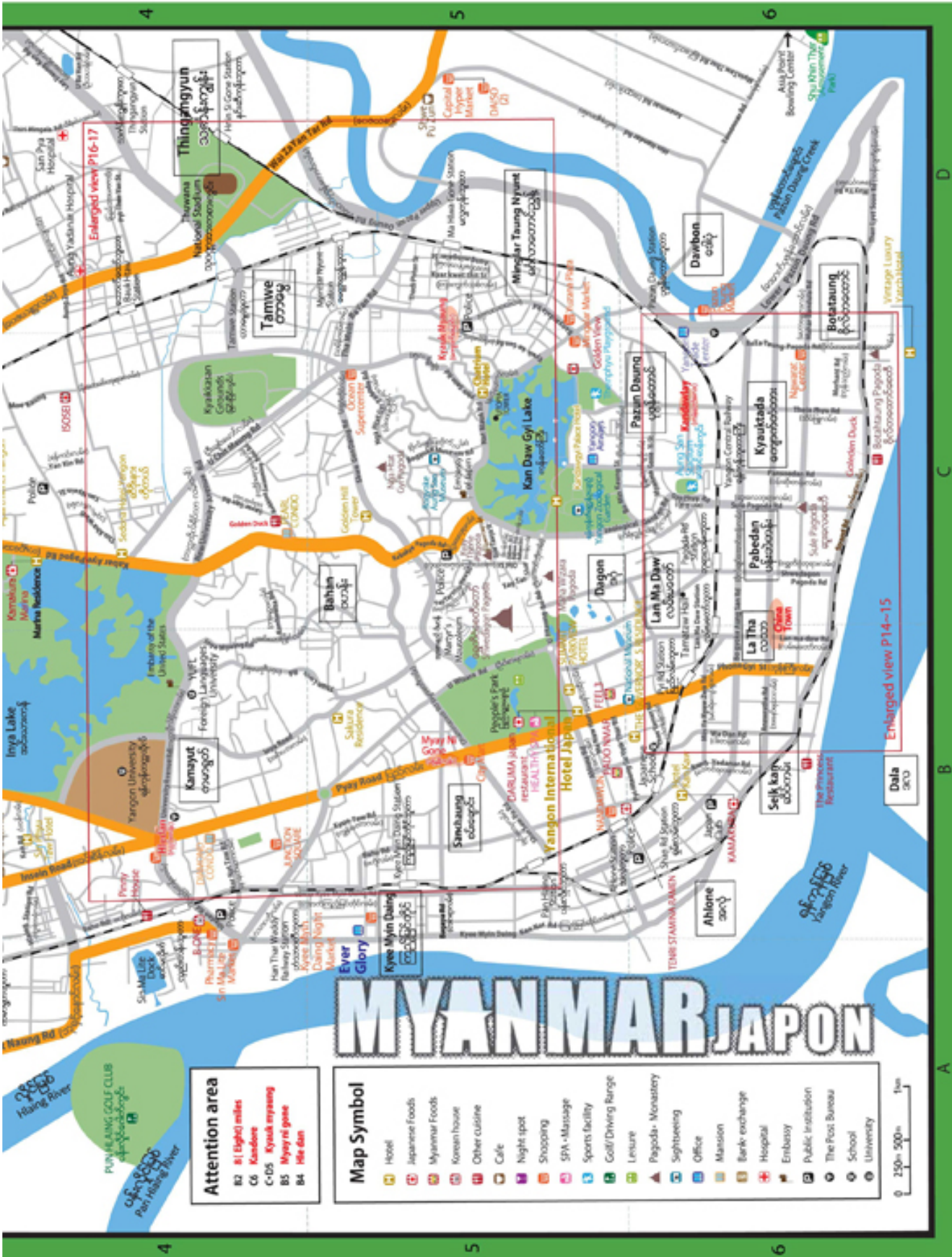
To conclude, I wish you all the best in your endeavors as Deputy Minister. We understand you are busy preparing for your trip to Italy today, so thank you very much for spending time with us.



NAGASUGI YUTAKA

CEO, MYANMAR JAPON CO., LTD.

The publisher of the Japanese language magazine MYANMAR JAPON and English language magazine MYANMAR JAPON +PLUS. As a Myanmar-based business journalist, his coverage ranges from business and economics to culture and arts using various sources such as government ministers, public information, and independent reporting. He provides a wide range of business expansion and investment advisory support services for foreign companies in Myanmar including market research, business matching, and company formation. He is President of Yangon Wakyo Kai, Vice President of the Japan Myanmar Friendship Association, and Special Committee Member of the Japan New Business Council Association.



Attention area

- B2 8| Eight miles
- C6 Kamadae
- C-DS Kyaukse bypassing
- B5 Myay ri gese
- B4 He dan

Map Symbol

- Hotel
- Japanese Foods
- Myanmar Foods
- Korean house
- Other cuisine
- Cafe
- Night spot
- Shopping
- SPA • Massage
- Sports facility
- Golf/Driving Range
- Leisure
- Pagodas • Monastery
- Sightseeing
- Office
- Mansion
- Bank exchange
- Hospital
- Embassy
- Public Institution
- The Post Bureau
- School
- University

* Whenever you go outside don't forget the Myanjarjapon MAP. If you forget Myanjarjapon MAP, don't go outside. * <http://myanmarjapon.com> (Yangon MAP.PDF Edition)

MYANMAR JAPON

To request permission to reprint MAP from this publication, "Please contact us"

Downtown of Yangon

GMYANMAR JAPON CO., LTD.

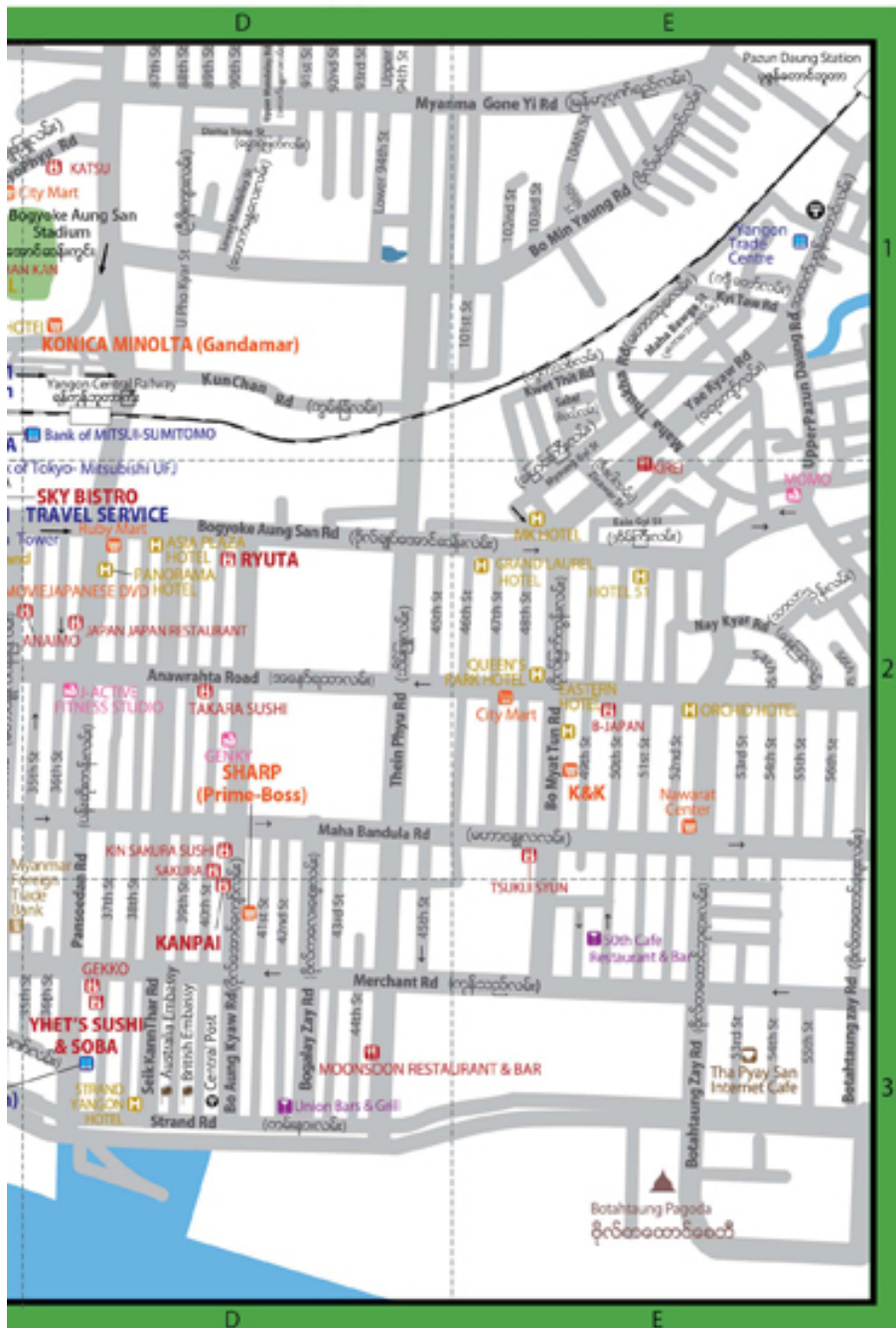
SKY BISTRO

Live Music Everynight 19:00 - 22:00

- ▶ Happy Hour 17:00-19:00
- ▶ Private Function Room Available for max 80pax

Sakura Tower 20th Floor
[TEL] 01-255-277 [Open] 10:00 - 23:00

\$6~
Imported Wines
BY THE GLASS



Unveiling our new look

→ We present a fresh look for our restaurants and bars, refurbished to unveil new ambiances with contemporary interiors influenced by our international cuisine.

Look forward to a gastronomic experience with us. Dine on local and continental favourites from our delectable buffet spreads and all-day a la carte menu at Spice Brasserie. Get an authentic taste of Sichuan and Cantonese flavours at our award-winning restaurant, Si Chuan Dou Huo. Enjoy modern Japanese fare at the exquisite Shiki Tei, unwind with a drink at The Lobby Bar, or swing to classic tunes at our new Club 5.

Authentic artworks for your home or office



Bahan Gallery
Our customer can buy on website
www.bahangallery.com

Famous myanmar artists
BAHAN GALLERY (MYANMAR)

Ei Ei Chaw
Tel: 01-8604301
info@bahangallery.com



parkroyalhotels.com
33 Alen Pya Phaya Road
Dagon Township, Yangon, 11191, Myanmar.
Tel : + 95 1 250 388
Fax : + 95 1 252 478
enquiry.prygn@parkroyalhotels.com

Hotels & Resorts | Kuala Lumpur • Melbourne • Nay Pyi Taw
• Parramatta • Penang • Saigon
• Singapore • Sydney • Yangon
New additions: Bogor (2015) • Bali (2016)
• Melbourne (2016) • Chengdu (2017)
• Langkawi (2017)

Service Suites | Kuala Lumpur • Singapore



*Whenever you go outside don't forget the Myanjapo MAP,if you forget Myanjapo MAP,don't go outside. - <http://myanmarjapon.com> (Yangon MAP - PDF Edition)









Yangon International Hotel Japan
 No.330 Ahlone Road,Dangon Township,Yangon TEL:+95-1-216001~4
<http://y-intl-hotel.com> E-mail: ygnithotel@gmail.com







Business and Lifestyle information in Myanmar

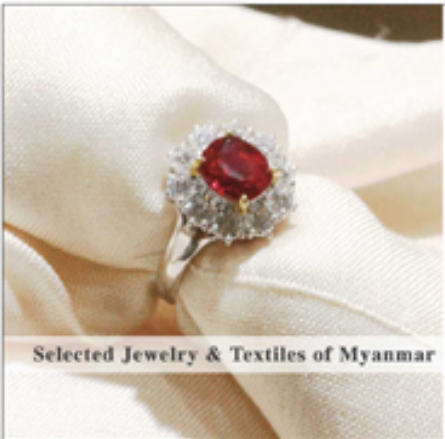


ONLINE

- ★ Update Business news
- ★ Real Estate
- ★ Recruitment
- ★ Restaurant
- ★ Useful information
- ★ Myanmar Japon +Plus provides services including foreign partner introduction and sales channel development



<http://plus.myanmarjapon.com>



Selected Jewelry & Textiles of Myanmar

Boutique
the Thiripitsaya
 ~ Jewels & textiles ~

Sakura Residence, No.9 Inya Rd
 Kamaryut Township, Yangon

Tel : (01)-525-001
 thiripitsaya.boutique@gmail.com
<http://sakura-residence-yangon.com/shop>

Opening Hours 10:00 - 18:00
 (Closed on Tuesdays)



AVAILABLE ADVERTISEMENT

ကြော်ငြာ ထည့်သွင်းနိုင်ပါပြီ



English Language Take Free Magazine

info@myanmarjapon.com
 Tel: 0931019178/01-8604301

Children enjoy making their own batteries



On September 4-5, Panasonic Asia Pacific conducted "Build your own battery" classes at 3 schools in Yangon and Bago with around 180 children participating. After learning about how the battery works, they did experiments and experienced building their own original dry cell. The children were delighted saying "I didn't think I could make my own electricity" and "Solar lanterns are very bright." The event was also on-the-job training for Myanmar teachers. Panasonic plans to expand such activities across the regions to build its brand awareness and increase sales.

Japan-Myanmar university students plan joint career event



On September 6th, in preparation for this December's "International Development Field Camp for Myanmar and Japan Youth Leaders (IDFC)" organized by Japan and Myanmar university student groups, a "Pre-IDFC One Day Event" was held at Yangon's UMFCCI. The event involved 11 students and young people from both Japan and Myanmar forming small groups to discuss and debate career paths and issues in both countries. This is the first time for such an event, and related events will be held in 3 cities in Japan leading up to the December main event.

Myanmar U23 friendly match Japan Football League select team wins



On September 10th at Thuwunna National Stadium, Myanmar's U23 (under 23 years old) men's soccer team played a friendly match against a select team from Japan's top amateur league, the Japan Football League (JFL).

Many Myanmar soccer fans packed the stadium and the JFL team won 3-0. The JFL select team is touring the Southeast Asian countries of Laos, Myanmar and Cambodia as part of the efforts to boost Asian soccer exchanges and strengthen player soccer skills, and the friendly match was organized in Myanmar.

Dairy industry business plans



How to develop the dairy industry in Myanmar? This was the theme for a discussion at the Inya Lake Hotel by managers from two major companies debating their business plans.

This event was sponsored by the Hong Kong HR company "The Global Institute for Tomorrow (GIFT)". As part of Orix's sponsorship of global human resource development program, the event was a joint training with Yoma Strategic Holdings Ltd.

Looking for treasure in the Gym Japan Language School hosts its annual bazaar



On August 9, the Yangon Japanese Language School held its annual bazaar. The bazaar was packed with PTA family members, Japanese Association members, and Myanmar guests who were looking for bargains on daily household items, clothes, books, food items, and handmade goods. One of the PTA in charge of the event, Ms. Emiko Tajima, commented on the successful event, "With so many people helping out, I really felt the Japanese WA (harmony)." The profits will be donated to the school.

Marubeni Myanmar Scholarship Fund First award ceremony



Marubeni has been providing scholarships for 12 years to academically strong technology students in Myanmar requiring financial assistance, and on September 15th, it hosted its first scholarship awards ceremony at Yangon Technological University. In attendance were the Deputy Minister of Science and Technology Mr. Ba Shwe, Marubeni Vice President Mr. Mamoru Sekiyama, Ambassador Extraordinary and Plenipotentiary to Myanmar Mr. Tateshi Higuchi, guests of Marubeni, representatives from the government and universities, and the scholarship recipients. This scholarship is distributed by the Ministry of Science and Technology to 31 students from Yangon Technological University and other colleges with each receiving 650,000 Ks.

We cover Myanmar events and seminars. If you have any corporate and social events which you would like covered, or any Japan-related news then please send us the information. edit@myanmarjapan.com



Japanese professor gives free seminar for Myanmar students

How to compete and innovate in an ever-flattening world? With this theme, the "Strategies for Creating Global Professionals Project" (President Manabu Yamamoto of the Yamamoto International Marketing Research Center) strives to teach young Myanmar people about marketing strategy and knowledge. On September 27th, it conducted a free seminar at the Yangon Institute of Economics attended by around 200 students. The lecturer was Professor Manabu Yamamoto from Tokyo University Graduate School of Engineering Faculty Kazuyuki Motohashi - Resilience Engineering Research Center.



New building construction underway at the Japanese School

On September 22nd, the Yangon Japanese School held a ground-breaking ceremony to start the construction of a new school building to cope with the rapid rise in the number of students. The Vice Presidents of the Japan Chamber of Commerce and Industry Yangon (JCCY) Mr. Hideshi Mega and Mr. Hiroyuki Mori and various employees were in attendance to pray for safety during construction. The school enrollment is expected to double to 300 students so the construction to expand the cramped facilities has started. During November 2-6, the school plans to celebrate its "50 Years Founding Anniversary Festival".



Japan Embassy sponsors Japan Education Fair

On September 30th, the Japan Embassy in Myanmar sponsored a Japan Education Fair at the Sule Shangri-La Hotel.

JASSO (Japan Student Services Organization) and MAJA (Myanmar Association of Japan Alumni) cooperated to organize the event as part of the "60 Years of Japan-Myanmar Diplomatic Relations Commemoration". Konica-Minolta, Pilot, and Ito En were also sponsors.

In addition to seminars by the Embassy and JASSO, there were booths set up for individual consultation by 5 national universities, 7 private universities and 18 Japanese Language Schools.



Japanese Speech Contest Rising Interest in Japanese language

On September 30th, the "4th Japanese Speech Contest in Yangon" was held at the Chatrium Hotel. Kyoritsu International Foundation sponsored the event and Momiji Japanese Center organized the event on the ground. The contest has been held in Yangon since 2011 and this year's event is part of the "60 Years of Japan-Myanmar Diplomatic Relations Commemoration". In the preliminaries, the participants selected one of 30 topics including Japanese economy, culture and current affairs to discuss, and then the winners of that round had to give a 3 minute impromptu speech. The top 5 winners were given a trip to Japan.



Sharing the joys of drawing with children Art classes on the outskirts of Yangon

"Knowing the joy of drawing, developing spiritually rich people" - this is the goal of "Art Class", one of KDDI Foundation's support activities for developing countries, which was held on October 4-5 at Pain Nae Gone village on the outskirts of Yangon. Around 80 children participated in the class drawing village scenes, family, and villagers. The teachers were two Japanese from Cambodia's "Small Art School" which is sponsored by KDDI. The works of art will be displayed from January 2015 in the New Zero Art Space Studio and sold for charity.



Developing traditional crafts Cultural exchange for Bagan lacquerware

The "Asian Lacquer Craft Exchange Research Project" held a lacquer craft culture exchange activity with the Bagan Lacquerware Technology College.

Mr. Kiichiro Masumura, a "living National Treasure" for preserving the intangible cultural heritage of lacquerware techniques, gave a lecture and technique presentation and around 70 cultural exchange items were displayed and workshops were conducted.

During the workshops, they looked at a non-harmful lacquer pigments developed in Japan and the color lacquer ware techniques used in Myanmar. The Asian Lacquer Craft Exchange Research Project started in 2002.

Organized by **M.P.S.** Myanmar Promotional Services(MPS) Co., Ltd.



60th anniversary of Myanmar-Japan diplomatic relations

JAPAN PRODUCTS EXPO 2014

November 20th to 23rd, 2014 @ Tatmadaw Hall

No.22/24, 7(A), Corner of Shin Saw Pu Rd & Baha Rd, Ahlone Tsp., Yangon, Myanmar. Hot Line : 09-4309666, 09-420001617, 09-250527722, 09-420005882, 09-42 036481

USEFUL INFORMATION

Information as of September 1, 2014. Details may change without notice.
[Dear business owners, please notify us of any changes to your information. edit@myanmarjapan.com]

Gourmet and Restaurants

☆---benefits discount of Japanese Association ... (5% to 10%, conditions vary depending on the shop)
☑---(There is some preferential discount with JCB Card)

Japanese cuisine

AJISAI

MAP P14-B2

☑ No.99, Shwe Taung Tan Street, Lanmadaw Township, Yangon

☎ 09-450040795 / 09-5135282 ☎ 10:00-22:00 (Daily)

AJISHIN

MAP P14-C1 ☆

☑ 18/8, Thukhawadi Lane, Suniran Park, Yankin Township, Yangon

☎ 01-562701 ☎ 11:30-23:00 (Open Daily)

ANAIMO

MAP P14-C2 ☆

☑ 303, Mahabandula Park Street, Kyauktada Township, Yangon

☎ 01-378022 ☎ 11:30-14:00 / 17:30-22:30 (Saturday only evening and Sunday off)

B-JAPAN

MAP P15-E2

☑ Bidg 115, Anawyahta Road, Corner of Anawyahta Road & 50th Street, 1 Quarter Pazundong Township, Yangon

☎ 01-398629

☎ 18:00-23:00 (LO 22:00)

☎ closed on Mondays

DARUMA JAPANESE RESTAURANT

MAP P13-B5 ☆

☑ (Yangon International Hotel), 330, Ahlone Road, Yangon

☎ 09-49270271 / 09-31263016 ☎ 11:00-23:00 (Daily)

DINING FUKUROU

MAP P16-C1 ☆

☑ No.81(C), New University Avenue Road, Bahan Township, Yangon

☎ 01-542871 / 09-420231330

☎ 11:00-15:00 / 17:00-22:00 (Open Daily)

EDOZUSHI

MAP P16-B2 ☆

☑ No.290-B, U Wisarya Road, 10 Ward Kamaryut Township, Yangon

☎ 09-259040653

☎ 11:00-23:00 (Sunday 17:00-21:00)

FAMILY SUSHI

MAP P17-D2

☑ Room 104, Building 27, U Chit Maung Housing, U Chit Maung Street, Tamwe Township, Yangon

☎ 09-73119456 / 09-5077223

☎ 10:00-23:00 (Open Daily)

FU-RIN

MAP P14-A2

☑ No.210, Anawyahta Road, Lanmadaw Township, Yangon

☎ 01-211702

☎ 11:30-14:00 / 17:00-23:00 (No fixed holiday)

FUJINOBO

MAP P16-C2

☑ (Cherry Hills Hotel) No.520/4 A, Kabar Aye Pagoda Road, Shwegon Daing, Bahan Township, Yangon

☎ 09-450067052

☎ 6:00-10:00 (LO 9:30) / 11:30-15:00 (LO 14:00) / 17:00-23:00 (LO 22:00) (Open Daily)

FUJI JAPANESE RESTAURANT

(1) MAP P16-A2

☑ 37, Hanthawaddy Road, Kamaryut Township, Yangon

☎ 09-73022338-9 / 01-514776 ☎ 11:00-21:30 (Daily)

(2) MAP P16-B2

☑ Market Place, Bahan Township, Yangon

☎ 09-73022339 ☎ 9:00-21:00 (Open Daily)

FURUSATO

MAP P16-B3 ☆

☑ No.137, West Shwe Gon Daing, Bahan Township, Yangon

☎ 01-556265 / 09-73081914

☎ 11:00-14:00 / 17:00-22:00 (Open Daily)

GEKKO

MAP P15-D3

☑ 535, Merchant Street, Kyauktada Township, 4th Quarter, Yangon

☎ 01-386986 ☎ 9:00-28:00 (Open Daily)

GOLDEN VIEW

MAP P13-C5 ☆

☑ No.23, Golden View Tower (A)G3, U Aung Myat Street, Mingalar Taungnyunt, Yangon

☎ 01-8619194 / 09-5080466 ☎ 10:00-22:30 (Daily)

HANA

MAP P14-B2 ☆

☑ No.81(A), Latha Street, Latha Township, Yangon

☎ 01-371508 / 09-5109435 / 09-31293852

☎ 10:00-22:00 (Open Daily)

HARU

MAP P16-C2

☑ 81, Kabar Aye Pagoda Road, Bahan Township, Yangon

☎ 09-421149721

☎ 11:00-14:00 / 18:00-22:00 (Open Daily)

HEIWA na JAPANESE RESTAURANT

MAP P14-C2

☑ No.207, 32 Street, Upper Block, Pabedan Township, Yangon

☎ 01-375931 / 09-73191927

☎ 11:00-14:00 / 17:00-22:30 (LO 22:00) (Daily)

HELLO

(1) MAP P16-A1

☑ No.2, Room-3, Narnattaw Road, Kamaryut Township, Yangon

(7) MAP P16-A2

☑ 2nd Floor, Junction Square, Yangon

☎ 01-514010 ☎ 9:00-21:00 (Open Daily)

HORN

MAP P16-B2 ☆

☑ No.36(A), Golden Valley Street, Quarter(2), Bahan Township, Yangon

☎ 01-513404 / 09-420003996

☎ 11:00-14:00 / 17:00-22:00 (Open Daily)

HOTARU

MAP P16-A2

☑ Building(5), Top Floor, Junction Square, Kamaryut Township, Yangon

☎ 09-73193966 ☎ 11:00-22:00 (Open Daily)

ICHIBAN KAN

MAP P14-C1 ☆

☑ G17/18, Aung San Stadium (North Wing), Gyophyu Street, Mingalar Taungnyunt Township, Yangon

☎ 01-394824 / 01-399051 / 09-42007600

☎ 11:30-14:00 / 17:30-22:00 (Open Daily)

ISOSEI

MAP P13-C4

☑ 47/B, Moe Kaung Road, Kyauk Kone, Yankin Township, Yangon

☎ 09-25059308

☎ 11:00-14:00 / 17:00-22:00 (Monday off)

IZUMI

MAP P16-A1 ☆

☑ 8G Diamond Condominium, Pyay Road, Kamaryut Township, Yangon

☎ 01-1221262 / 09-421144386

☎ 11:30-14:00 / 17:30-22:00 (No fixed holiday)

JAPAN JAPAN RESTAURANT

MAP P15-D2

☑ No.253, Pansodan Upper Block, Kyauktada Township, Yangon

☎ 09-5130016 / 09-49577448 ☎ 11:00-22:30 (Daily)

KAMAKURA

MAP P13-B6 ☆

☑ 1 Floor, HOTEL KAN KAW, No.93(A), Hnin Si Kone Street, Ahlone Township, Yangon

☎ 01-228566 (Ext.122)

☎ 7:00-9:30 / 11:00-14:30 / 17:00-23:00 (Open Daily)

KAMAKURA Marina

MAP P13-C4

☑ (inside of Marina Residence) 8 Kabar Aye Pagoda Road, Ward No.10 Mayangone Township, Yangon

☎ 01-650651 (Ext.8100) / 09-420048231

☎ 11:00-14:00 / 17:00-22:00 (Open Daily)

KANPAI

MAP 15-D3

☑ No.207, Bo Aung Kyaw Street, Kyauktada Township, Yangon

☎ 09-254269727 ☎ 10:00-22:00 (Open Daily)

KATANA

MAP P16-C1

☑ 138 C, New University Avenue Road, Bahan Township, Yangon

☎ 01-400842 ☎ 11:00-14:30 / 17:30-23:00 (LO 22:00) (Open Daily)

KATSU

MAP P15-D1

☑ No.B-2, Aung San Stadium (North Side), Yangon

☎ 01-381233 / 09-250402200

☎ 11:30-14:00 / 17:30-22:00 (2nd & 4th Sunday off)

KIN SAKURA SUSHI

MAP P15-D2

☑ BAK, Olympic Tower, First Floor, Bo Aung Kyaw Street, Kyauktada Township, Yangon

☎ 01-256720 (Ext.204) / 09-5147840 / 09-250150816

☎ 11:00-21:00 (Open Daily)

KIREI

MAP P15-E2

☑ No.48, Yaekyaw Road, Fazuntaung Township, Yangon

☎ 12:00-15:00 / 17:00-22:00 (Monday off)

☎ 09-254162292 / 09-254162272

KOBEYA

MAP P16-A1 ☆

☑ 615(B), Marlar Street, Pyay Road, Kamaryut Township, Yangon

☎ 01-535072 / 09-420015401

☎ 11:00-14:00 / 17:00-23:00 (Open Daily)

KOCHO

MAP P17-D2 ☆

☑ 5-4, U Chit Maung Housing, Tamwe Township, Yangon

☎ 09-254191597

☎ 11:30-14:00 / 17:30-22:00 (Open Daily)

KOHAKU

MAP P17-D3 ☆

☑ (Chatrium Hotel) No.40, Natmauk Road, Tamwe Township, Yangon

☎ 01-544500 (Ext.6231)

☎ 11:30-14:00 / 18:00-22:30 (Open Daily)

KOKORO

MAP P17-D2

☑ 55, Bo Sein Mhan Street, Bahan Township, Yangon

☎ 01-549544 / 01-4985376 ☎ 11:00-22:00 (Daily)

Ko San 19th Street

MAP P14-B2

☑ 108, 19th Street, Latha Township, Yangon

☎ 09-420061869 / 09-428038032 ☎ 12:00-24:00

Ko San Cafe

MAP P16-A1

☑ 18, U Tun Lin Chan Street, Hledan, Yangon

☎ 01-706437 ☎ 8:00-23:00 (Open Daily)

LITTLE TOKYO

(1) MAP P12-A3

☑ 10(D), Khaboung Road, Hlaing Township, Yangon

☎ 09-73185168 / 09-73178946 ☎ 10:30-22:00 (Daily)

(2) LITTLE TOKYO RAMEN HOUSE MAP P16-A2

☑ 2nd Floor, Junction Square, Yangon

☎ 09-73200185 ☎ 9:30-21:00 (Open Daily)

MANPUKU

MAP P14-A1

☑ 30, Sagawar Street, Dagon Township, Yangon

☎ 01-214284 / 09-8300426 / 09-5046736

☎ 15:00-23:00 (LO 22:00) (Open Daily)

MARU GRILL RESTAURANT

MAP P14-B2 ☆

☑ No.134 Ground Floor, Shwe Taung Tan Road, 7 Quarter, Lanmadaw Township, Yangon

☎ 01-1221568 / 09-420308350

☎ 11:30-14:00 / 17:30-22:00 (Open Daily)

MATSU SUSHI

MAP P14-B2

☑ No.125, 19th Street, Latha Township, Yangon

☎ 01-250714 / 09-32210099

☎ 11:00-14:00 / 17:00-23:00 (Daily)

MINA-O

MAP P14-C1

☑ No.284/286, Yaw Min Gyi Street, Dagon Township, Yangon

☎ 09-31109915 / 09-250007972

☎ 10:00-22:00 (Open Daily)

MIYOSHI RAMEN

MAP P14-C1 ☆

☑ 42/E, Bo Yar Nyunt Street, Dagon Township, Yangon

☎ 09-420098866

☎ 11:00-15:00 / 17:00-22:30 (Sunday off)

MIYAKO

MAP P12-D3

☑ No.850, 10 Ward, Than Thu Mar Road, South Okkappa Township, Yangon

☎ 01-579781 ☎ 11:00-22:30 (Daily)

On September, opened in South Okkappa Township. Value shop with delicious Japanese foods.

MONDO

MAP P14-C1

☑ 26(B), Yaw Min Gyi Street, Dagon Township, Yangon

☎ 01-252261 ☎ 11:30-13:30 / 17:30-22:30 (Daily)

M'S DINING BAR

OISHII

- (1) **MAP P14-B2**
 No.98, Latha Street (Middle Block), Latha Township, Yangon
 ☎ 01-708685 ☎ 10:00-22:00 (Open Daily)
- (2) **MAP P14-B2**
 No.69, Shwe Daung Tan Street (Middle Block), Lanmadaw Township, Yangon
 ☎ 09-31287053 ☎ 10:00-21:30 (Open Daily)
- REN** **MAP P16-C1**
 No.53, Sayasan Street, Bahan Township, Yangon
 ☎ 01-1222488 ☎ 11:00-24:00 (Open Daily)
- RYUTA** **MAP P15-D2**
 No.249-B, Ground Floor, Corner of 40th Street & Bogyoke Aungmye Road, Kyauktada Township, Yangon
 ☎ 09-25019149 ☎ 11:30-14:00 / 17:00-22:00 (Daily)
- SAKURA** **MAP P15-D2**
 No.150, 40th Street (Lower Block), Kyauktada Township, Yangon
 ☎ 01-245160 / 09-254144359
 ☎ 12:00-15:00 / 17:00-21:30 (Closed on Mondays)
- SAMURAI STYLE** **MAP P16-C1**
 (Inside Onocoro) Near Yankin Market & Sayar San Road, Yankin Township, Yangon
 ☎ 09-254265526
 ☎ 11:00-22:00 (Open Daily)
- SAMURAI SUSHI** **MAP P16-C3**
 No.4EF, Ground Floor, Winkabar Street, Bahan Township, Yangon
 ☎ 09-73081871 / 09-5123240
 ☎ 11:00-22:00 (Open Daily)
- SEI** **MAP P16-C2**
 (Aye Chan Thar Hotel) No.292/16 Aye Chan Thar Yar Road, Middle Shwe Gone Daing, (9)Block, Bahan Township, Yangon
 ☎ 01-542222 ☎ 17:00-23:00 (LO 22:00) (Monday off)
- SHABU-SHI** **MAP P17-D2**
 (Ocean Super Center) Corner of Shwe Gone Daing Road and Ba Nyar Dala Road, Bahan Township, Yangon
 ☎ 10:00-22:00 (Open Daily)
- SHABU TEI** **MAP P16-B1**
 No.20, University Avenue, Bahan Township, Yangon
 ☎ 01-526655 ☎ 10:00-22:00 (Monday off)
- SHIAWASE SUSHI** **MAP P14-C1**
 No.38-40/1 (A), Boyarmyunt Street, Dagon Township, Yangon
 ☎ 09-49259184 / 09-450046434
 ☎ 9:30-21:30 (Open Daily)
- SHIKI-TEI** **MAP P14-C1**
 (Park Royal Yangon), No.33, Alan Pya Phaya Road, Dagon Township, Yangon
 ☎ 01-250388 (Ext.8119)
 ☎ 11:30-14:30 / 18:00-23:00 (Open Daily)
- SHOSUKE** **MAP P12-C3**
 No. (208, A), Parami Road, 4-Ward, South Okkalapa Township, Yangon
 ☎ 09-254137655 ☎ 11:00-24:00 (Open Daily)
- SUSHI HOUSE**
 (1) **MAP P16-C2**
 No.247/269 B, Room 001, Build C, Delta Plaza, Middle Shwe Gone Daing Street, Bahan Township, Yangon
 ☎ 01-552772 ☎ 11:00-22:00 (Open Daily)
- (2) **MAP P14-A1**
 No.45, Room 8023, Basement(B1), Tawwin Center, Pyay Road, Dagon Township, Yangon
 ☎ 01-8600111 (Ext.1123) ☎ 9:00-21:00 (Open Daily)
- (3) **MAP P16-A3**
 No.86/B, Shin Saw Pu Street, Sanchaung Township, Yangon
 ☎ 01-511203 ☎ 11:00-22:00 (Open Daily)
- SUSHI ICHI** **MAP P14-A2**
 No.105, Phone Gyi Road (Middle Block), Lanmadaw Township, Yangon
 ☎ 01-218282-4 ☎ 10:00-22:00 (Open Daily)
- SUSHI UNAGI TEI** **MAP P14-A2**
 No.94-A, Lanthit Road, Lanmadaw Township, Yangon
 ☎ 01-228649 / 092-50143462 / 094-22461827
 ☎ 11:00-14:00 / 17:00-22:00 (Open Daily)
- SUSHI YANGON** **MAP P16-B3**
 Myanmar Culture Valley, People's Park & People's Square, U Wisara Road, Dagon Township, Yangon
 ☎ 09-5030471 / 09-5005613
 ☎ 9:00-22:00 (Open Daily)
- TAKARA SUSHI** **MAP P15-D2**
 No.79/B1 Corner of 40th Street & Anawrahta

- Road, Kyautada Township, Yangon
 ☎ 01-381987 (Ext.1002) ☎ 9:00-21:00 (Open Daily)
- TEKETEKE** **MAP P16-C3**
 No.12, Bo Gyoke Museum Street, Bahan Township, Yangon
 ☎ 01-8604434 ☎ 11:00-23:00 (Open Daily)
- TENRI STAMINA RAMEN** **MAP P13-B6**
 No.24, Bahso Street, Ahlone Township, Yangon
 ☎ 09-73088884 ☎ 10:00-22:00 (Open Daily)
- TSUKUI SYUN** **MAP P15-E2**
 No. Myat Tun Condo, Building(A), Ground Floor, Room(G-03), Botahtaung Township, Yangon
 ☎ 09-31053910 / 09-420308588
 ☎ 11:30-14:00 / 17:30-23:00 (Sunday off)
- TOMO** **MAP P14-B2**
 No.702, Mahabandoola Street, Latha Township, Yangon
 ☎ 01-251302 ☎ 10:00-22:00 (Open Daily)
- TORI** **MAP P16-B3**
 No.135, Inya Road, Bahan Township, Yangon
 ☎ 09-250268732 ☎ 18:00-24:00 (Open Daily)
- URESHI KITCHEN**
 (1) **MAP P14-B2**
 No.111, Shwe Taung Tan Street, Lanmadaw Township, Yangon
 ☎ 01-224810 ☎ 9:00-22:00 (Open Daily)
- (2) **MAP P16-A1**
 Corner of Kyun Taw Road & Nar Nat Taw Street, Kamaryut Township, Yangon
 ☎ 01-536496
 ☎ 10:00-22:00 (Open Daily)
- WASABI** **MAP P14-C1**
 No.38/40, Boyarmyunt Street, Dagon Township, Yangon
 ☎ 09-5039139 / 09-425020667
 ☎ 11:30-15:00(LO 14:30) / 17:30-22:30(LO 21:30) (Monday off)
- YAKINIKU FUKU-CHAN** **MAP P16-C2**
 No.28(A), Koking Swimming Pool Lane, Sayar San Main Road, Bahan Township, Yangon
 ☎ 01-555421 / 01-544156 / 09-5177176
 ☎ 11:00-14:00 / 18:00-22:00 (Open Daily)
- YAMAGOYA RAMEN** **MAP P16-C1**
 No.520, Uyin street, Sayasan Quarter, Bahan Township, Yangon
 ☎ 01-556774
 ☎ 11:00-15:00 / 18:00-22:00 (Sat, Sunday 11:00-22:00)
- YHET'S SUSHI&SOBA** **MAP P15-D3**
 No.57, Ground Floor, 37th Street (Lower Block), Kyauktada Township, Yangon
 ☎ 01-377212
 ☎ 11:00-22:00 (Open Daily)

Myanmar cuisine

- AUNG THU KA** **MAP P16-B3**
 No.17(A), 1st Street, West Shwe Gone Daing Road, Bahan Township, Yangon
 ☎ 01-525194 / 09-5005296 / 09-5100683
 ☎ 9:00-21:00 (Open Daily)
- FEEL 3** **MAP P13-B5**
 No.124, Pyithaungzu Yektha Street, Dagon Township, Yangon
 ☎ 09-73208132 / 09-73048783 ☎ 6:00-20:30 (Daily)
- HAPPY CAFE & NOODLES** **MAP P16-B1**
 No.1048 Inya Road, Kamaryut Township, Yangon
 ☎ 01-536985 ☎ 7:00-23:00 (Open Daily)
- PADONMAR RESTAURANT** **MAP P13-B5**
 No.105/107, Kha-Yae-Bin Road, Dagon Township, Yangon
 ☎ 01-538895 / 01-1220616 / 09-73029973
 ☎ 11:00-23:00 (Open Daily)
- SHAN YOE YAR RESAURANT** **MAP P14-A2**
 No.169, War Tan Street, Lanmadaw Township, Yangon
 ☎ 01-221524 / 09-250-566-695
 ☎ 06:00-22:00 (Last Order 21:30) (Open Daily)

Other cuisine

- ADAMAS** **MAP P16-B2**
 No.14, Kanbawza Street, Golden Valley Bahan Township, Yangon
 ☎ 01-541064 / 01-526490 ☎ 11:00-22:30 (Daily)
- Asegi Bar & Restaurant** **MAP P16-A1**
 Corner of Kyun Taw Road and Nar Nat Taw Road Kamaryut Township, Yangon

- ☎ 01-539598 ☎ 09:00-23:00 (Daily)
- CAFE DIBAR** **MAP P16-B1**
 No.104, University Avenue Road, Kamaryut, Yangon.
 ☎ 09-5006143 / 09-5114932 ☎ 10:00-22:00 (Daily)
- CAFE NAPOLI** **MAP P16-C2**
 No.287, East Shwe Gon Dine Road, Bahan Township, Yangon.
 ☎ 01-554957 / 09-420207233 / 09-250108513
 ☎ 10:00-21:30 (Daily)
- DELI CAFE & CAKES BAKERY CAFE** **MAP P12-A1**
 No.1 Kaba Aye Pagoda Road Yankin Township Yangon.
 ☎ 01-666 900 ☎ 7:00-21:00 (Open Daily)
- FRIENDSHIP RESTAURANT** **MAP P12-C2**
 No.102, Nawaday Theatre, Corner of Kaba Aye Pagoda Road & Oak Pone Seik Road, Mayawngone Township, Yangon
 ☎ 09-49322498 / 01-664741 (Ext.106)
 ☎ 9:00-14:00 / 16:00-22:30 (Open Daily)
- GOLDEN CRAB** **MAP P17-D2**
 No.28, Ground Floor(Right Side), South Horse Race Course Street, Tawme Township, Yangon
 ☎ 01-541331 / 09-73139172 ☎ 11:00-22:00(Daily)
- GOLDEN DUCK Restaurant**
 Sayasan Branch **MAP P13-C4**
 ☎ 09-73163366 / 09-73163377 ☎ 11:00-21:45(Daily)
- Junction 8 Branch **MAP P12-B2**
 ☎ 09-8617477 / 09-73355733 ☎ 11:00-21:45(Daily)
- Kan Taw Min Branch
 ☎ 09-73229233 / 01-240216 ☎ 10:30-22:00(Daily)
- Strand Road Branch **MAP P13-C6**
 ☎ 01-241234 / 01-372603 ☎ 10:00-21:00(Daily)
- HOUSE OF MEMORIES** **MAP P16-B2**
 No.290, U Wisara Road, Kamaryut Township, Yangon
 ☎ 01-534242 / 01-525195 ☎ 11:00-23:00 (Daily)
- L'OPERA** **MAP P12-C3**
 No.62/D, U Tun Nyein Street, Mayawngone Township, Yangon(Near Inya Lake Hotel)
 ☎ 01-655516 / 01-660976 / 09-73080755
 ☎ 11:00-14:00 / 18:00-22:30 (Open Daily)
- MOONSOON RESTAURANT & BAR** **MAP P15-D3**
 No.85-87, Thein Phyu Road, Botataung Township, Yangon
 ☎ 01-295224 / 01-378421 / 09-5015653
 ☎ 10:00-23:00 (Open Daily)
- ORZO ITALIAN RESTAURANT** **MAP P16-C1**
 No.1 Kaba Aye Pagoda Road Yankin Township Yangon
 ☎ 01-666 900 ☎ 18:30-22:00 (Open Daily)
- PINNY HOUSE RESTAURANT** **MAP P13-B4**
 No.59, Bahso Street, Hiedan Township, Yangon
 ☎ 09-31915110 ☎ 11:00-14:00 / 17:00-23:00 (Daily)
- POOL BAR** **MAP P17-D3**
 Ground Level, In pool garden CHATRIUM No.40, Natasaik Road, Tawme Township, Yangon.
 ☎ 01-544500 (Ext.6277) ☎ 10:00-18:00 (Daily)
- POTATO BREAK FAST FOOD RESTAURANT** **MAP P16-B3**
 Myanmar Culture Valley, U Wisara road, People's Park, Yangon.
 ☎ 09-5002588 / 09-254320342 ☎ 9:00-22:00 (Daily)
- ROYAL GARDEN RESTAURANT** **MAP P17-D3**
 Nat Mouk Road, Central Forest Zone, Kandawgyi Nature Park, Bahan Township, Yangon
 ☎ 01-546923 / 01-546202
 ☎ 6:15-14:15 / 18:00-22:30 (Open Daily)
- SHWE KAUNG HOT POT(TI)** **MAP P16-C3**
 No.18 Ko Min Ko Chin Road, Shwe Gon Daing, Bahan Township, Yangon
 ☎ 01-559339 ☎ 10:30-22:30(Open Daily)
- SI CHUAN DOU HUA** **MAP P14-C1**
 Inside Parkroyal, Alan Pya Phaya Road, Dagon Township, Yangon
 ☎ 01-250388 (Ext.8118) ☎ 11:00-14:30(Dim Sum)
 ☎ 16:00-21:30 (Buffer)
- SIGNATURE RESTAURANT/GARDEN** **MAP P16-C3**
 Corner of Bahan Street & Kan Yeh Thar Street, Bahan Township, Yangon
 ☎ 01-546487-8 / 01-543387
- SKY BISTRO** **MAP P14-C2**
 20th Floor, Sakura Tower, Bogyoke Aung San Road, Kyauktada Township, Yangon
 ☎ 01-255277 ☎ 9:00-22:00 (Open Daily)
- THAI POT** **MAP P17-D1**
 No.250, East Myin Pyine Kwin Road, Tawme Township, Yangon
 ☎ 09-8610393 / 09-5007997 ☎ 17:30-23:00(Open Daily)

THE HOUSE

MAP P16-B2
 No.6, Kanbawza Street, Bahan Township, Yangon
 ☎ 01-8634400/01-554212 ☎ 11:00-24:00 (Daily)

XI YANG YANG

MAP P16-A3
 No.4, Nyaung Tong Road, Sanchaung Township, Yangon
 ☎ 01-502582 ☎ 7:00-21:00 (Open Daily)

THE EMPORIA RESTAURANT

MAP P17-D3
 Ground Level, CHATRIUM HOTEL
 No.40, Natmauk Road, Tamwe Township, Yangon.
 ☎ 01-544500 (Ext.6253) ☎ 06:00-10:30/
 ☎ 11:30-14:30/18:00-22:30 (Daily)

HOTEL**BELMONT GOVERNOR'S RESIDENCE**

MAP P13-B6
 No.35, Taw Win Road, Dagon Township, Yangon
 ☎ 01-229860 / 01-229861

BEST WESTERN GREEN HILL HOTEL

MAP P17-D3
 12, Pho Sein Road, Tamwe Township, Yangon
 ☎ 01-209299 / 01-209300, 209343, 209345

CENTRAL HOTEL

MAP P14-C2
 335-337, Bogyoke Aung San Road, Pabedan
 Township, Yangon
 ☎ 01-241001-20

CHATRIUM

MAP P17-D3 ☆ **EE**
 No.40, Natmauk Road, Tamwe Township,
 Yangon
 ☎ 01-544500 / 01-544244

CHERRY HILLS HOTEL

MAP P16-C2
 No.520/4 A, Kabar Aye Pagoda Road, Shwegon
 Daing, Bahan Township, Yangon
 ☎ 01-559722

CLOVER HOTEL

MAP P16-C3
 7/A, Wingabar Road, Bahan Township, Yangon
 ☎ 09-7317781-4

CLOVER CITY CENTER HOTEL

MAP P14-C2
 217, 32nd Street (Upper Block), Pabedan Township,
 Yangon
 ☎ 01-377720-1 / 01-378276 / 01-378274

CLOVER CITY CENTER PLUS HOTEL

MAP P14-C2
 No. 299, 32nd Street (Upper Block),
 Pabedan Township, Yangon
 ☎ 01-377975/01-377976/01-378685

EAST HOTEL

MAP P14-C2
 234-240, (1) Quarter, Sule Pagoda Road, Kyauktada
 Township, Yangon
 ☎ 01-371358 / 09-73135311

EASTERN HOTEL

MAP P15-E2
 No.194/196, Bo Myat Hsun Street, Pazundaung
 Township, Yangon
 ☎ 01-293815 / 01-293168-9

GRAND LAUREL HOTEL

MAP P15-E2
 No.153/159, Bogyoke Aung San Road, Botahtaung
 Township, Yangon
 ☎ 01-358771 / 01-298986 / 01-296209

HIGH FIVE HOTEL

MAP P12-C1
 No. 35, Thiri Kan Thar St, North Okkalapa Township,
 Yangon, Myanmar
 ☎ 01-691900, 01-691885, 01-691698

HOTEL 51

MAP P15-E2
 No.154/156, 51st Street (Upper Block),
 Pazundaung Township, Downtown Yangon, Yangon
 ☎ 01-293022, 01-294460

HOTEL ESTA

MAP P14-A2
 No.15/20 Bogyoke Aung San Road,
 Bahou Compound, Lanmadaw Township, Yangon
 ☎ 01 223 701 / 01-223702/01-223703

HOTEL GRAND UNITED (21ST DOWNTOWN)

MAP P14-C2
 No. 66-70, 21st Street, Latha Township,
 Yangon.
 ☎ 01-378 200

HOTEL GRAND UNITED (AHLONE BRANCH)

MAP P13-B6
 No. 35, (Corner of Hinin Si Gone Road, Front of Centra
 Women Hospital), Min Ye Kyaw Zwa Rd, Yangon
 ☎ 01-391070

HOTEL GRAND UNITED (Chinatown)

MAP P14-B2
 No. 621, Mahabandoola Road (Corner of
 Bo Ywe Street), Latha Township, Yangon
 ☎ 01-372256/ 01-372257/ 01-372258

HOTEL KAN KAW

MAP P13-B6 **EE**
 No.93(A), Hinin Si Gone Road, Ahlone
 Township, Yangon
 ☎ 01-228566 / 01-2301700 / 01-1221731 / 01-122189 8

INYA LAKE HOTEL

MAP P12-C3
 No.37, Kaba Aye Pagoda Road, Yangon
 ☎ 01-9662866 / 01-9662857-9

KANDAWGYI PALACE

MAP P16-C3 **EE**
 Kan Yeik Tha Road, Mingalar Taung Nyunt
 Township, Yangon
 ☎ 01-249255

MICASA HOTEL

MAP P12-C3 **EE**
 No.17, Kaba Aye Pagoda Road, Yankin
 Township, Inya Lake, Yangon
 ☎ 01-650933

MYANMAR LIFE HOTEL

MAP P12-B1
 No.41, Radio Station Road, Mingalardon, Yangon
 (Near Yangon International Airport)
 ☎ 01-664135, 664939, 661820, 664483

PANDA HOTEL

MAP P14-A1
 205, Corner Of Wadan Street & Min Ye Kyaw
 Swar Road, Lanmadaw Township, Yangon
 ☎ 01-212850-2 / 01-229358 / 01-229360-1

PARK ROYAL

MAP P14-C1 **EE**
 33, Alan Pya Phaya Road, Dagon Township, Yangon
 ☎ 01-250388

SAVOY HOTEL

MAP P16-B3
 129, Corner Of Dhammazedi Road & Inya Road,
 Yangon
 ☎ 01-526289 / 01-526298 / 01-526805

SEDONA HOTEL

MAP P16-C1
 No.1, Kaba Aye Pagoda Road, Yankin Township,
 Yangon
 ☎ 01-666900 / 01-666953

STRAND YANGON

MAP P15-D3 **EE**
 No.92, Strand Road, Yangon
 ☎ 01-243377

SULE SHANGRI-LA

Renamed - Old TREDERS (Traders) **MAP P14-C2**
 No.223, Sule Pagoda Road, Kyauktada Township,
 Yangon
 ☎ 01-242828

SUMMIT PARKVIEW HOTEL

MAP P13-B5 **EE**
 350, Ahlone Road, Dagon Township, Yangon
 ☎ 01-211888 / 01-211966

VINTAGE LUXURY YATCH HOTEL

MAP P13-C6
 No.6, Botahtaung Jetty, Botahtaung Township
 Yangon.
 ☎ 01-9010533 / 01-9010999

SPORT**GOLF****CITY GOLF CLUB**

MAP P12-A1
 Thirimingalar Street, 10Miles, Insein Township-
 Yangon
 ☎ 01-640086 / 01-641343 / 09-421119932
 ☎ 5:30-18:00 (Open Daily)

PUN HLAING GOLF CLUB

MAP P13-A4
 Pun Hlaing Golf Estate Avenue, Hlaing Tharyar,
 Hlaing Township, Yangon
 ☎ 01-684020-4 ☎ 6:00-15:00 (Closed on Mondays)

YANGON GOLF CLUB

MAP P12-A1
 Da Nyin Gone Golf Course, Insein Township, Yangon
 ☎ 01-635617 / 01-635563
 ☎ 6:00-18:00 (Reservations required Monday holiday
 Saturdays Sundays and holidays only play)

Royal Mingalardon Golf & Country Club

No.3 Highway, No.1 Mingalardon Garden
 City, Mingalardon Township, Yangon
 ☎ 01-639445 / 09-8636395
 ☎ Every Tuesday to Sunday (6:00 a.m - 6:00 p.m.)

Myanmar Golf Course

MAP P12-B2
 9 mile, Pyay Road Road,
 Mayangone Township, Yangon
 ☎ 0932161224
 ☎ Every Tuesday to Sunday (5:30 a.m - 4:00 p.m)

Okkala Golf Course

MAP P12-C3
 Corner of Gandamar Road & Waizayandar
 Road, South Okkalapa Township, Yangon
 ☎ 09-420071705
 ☎ 5:00-17:00 (Open Daily)

COFFEE / FAST FOOD**ACACIA TEA SALON**

MAP P16-C1 **EE**
 No.52 Saya San Road, Bahan Township, Yangon
 ☎ 01-554739 ☎ 10:00-22:00 (Open Daily)

FRESHNESS BURGER

MAP P16-B3
 (At Myanmar Culture Valley) People's Park & People's
 Square, U Wisara Road, Dagon
 Township, Yangon
 ☎ 09-32316061 / 09-254408637
 ☎ 10:00-20:00 (Open Daily)

LA VIE EN ROSE

MAP P16-A3
 No.136, Bargayar Road, Sa Ya Tun Street Corner,
 Sanchaung Township, Yangon
 ☎ 01-503373 ☎ 10:00-20:00 (Open Daily)

(1) MAP P16-B1

No.(78-D), Inya Road, Kamayut Township, Yangon
 ☎ 09-31262648 ☎ 10:00-20:00 (Open Daily)

(2) MAP P16-B1

(Cafe ON THE WAY) No.121-E, Than Lwin Road,
 Kamayut Township, Yangon
 ☎ 09-250988271 ☎ 9:00-21:00 (Open Daily)

LOTTERIA

(1) Junction Square Branch **MAP P16-A2**
 ☎ 8:30-22:00 (Open Daily)

(2) Pearl Condo Branch **MAP P16-C2**
 ☎ 8:00-22:30 (Open Daily)

(3) China Town Branch **MAP P14-A2**
 ☎ 8:00-22:30 (Open Daily)

(4) Junction 8 Branch **MAP P12-B2**
 ☎ 9:00-22:30 (Open Daily)

BAR NIGHTSPOT**50th Street Café Restaurant & Bar**

MAP P15-E3
 No.520, (A 3/4), Kabaraye Pagoda Road,
 Shwe Gon Daing, bahan Township, Yangon
 ☎ 01-8603045 ☎ 24 Hours (Daily)

Gallery Bar & Restaurant

MAP P14-C2
 No.223, Sule Pagoda Road, Kyauktada Township,
 Yangon
 ☎ 01-242828

WINE BAR MARIU

MAP P14-B2 **EE**
 No.130 Ground Floor, Shwe Taung Tan
 Road, 7 Quarter, Lanmadaw Township, Yangon
 ☎ 01-1221568 / 09-420308350 ☎ 18:00-24:00 (Daily)

PWINT THIT SANN

MAP P16-C3
 No.520, (A 3/4), Kabaraye Pagoda Road,
 Shwe Gon Daing, bahan Township, Yangon
 ☎ 01-8603045 ☎ 24 Hours (Daily)

Union Bar & Grill

MAP P15-D3
 No.42 Strand Road, Yangon
 ☎ 09-31018272 ☎ 10:00-1:00 (Daily)

VISTA BAR

MAP P16-C3
 No.168, Corner of Shwegondine Road and
 Yaedarsay Road, Bahan Township, Yangon
 ☎ 09-51559481 ☎ 17:00-25:00 (Open Daily)

SOUVENIR**BURN**

MAP P16-A3
 77, Min Street, Sanchaung Township, Yangon
 ☎ 01-519001 / 09-5027390 ☎ 11:00-21:00 (Sunday off)

K&K

MAP P15-E2
 No.99 GF, 49th Street, Pazundaung
 Township, Yangon
 ☎ 09-32221481 / 09-254070580
 ☎ 9:00-17:00 (Open Daily)

Select Boutique the Thiripitsaya -jewels & textiles

MAP P16-B2 **EE**
 Sakura Residence, No.9 Inya Road, Kamayut
 Township, Yangon, Myanmar
 ☎ 01-525001
 ☎ 10:00-18:00 (Tuesday off)

SUN MOVIE JAPANESE DVD

MAP P14-C2
 No.156/158, 34 Street, Upper, Anawrahtar Road,
 Kyauktada Township, Yangon
 ☎ 09-256218704 ☎ 11:00-21:00 (Open Daily)

Beauty, health**Spa sauna****GOLDEN PARK**

MAP P12-D2 (Outside Right)
 National Sports Complex, Pin Lon Road, North Dagon
 Township, Yangon
 ☎ 09-254263991 ☎ 8:00-26:00 (Open Daily)



KONICA MINOLTA

bizhub C224e

A Total Solution for Your Business Needs

SECURITY



- User Authentication
- Account Tracking by User and Department
- Secured & PW Printing
- IC Card Authentication*
- Biometric Authentication*



PRINTING

- Duplex Printing
- Direct Printing from USB, Web Browser, iPhone / iPad , Android
- Direct USB Printing of Word, Excel, PDF, JPEG
- Print up to 300gsm thickness
- Banner Printing up to 1.2m (47 inches)
- Booklet Printing



STORAGE

- 250 GB Storage
- Personal User Box Storage



SCANNING

- Scan to USB, Computer, Email, User Box, Server, Cloud
- Scan documents into PDF, Compact PDF, PPTX, TIFF, JPEG, Word*, Excel*
- Single-Pass Dual-Scan*
- Text Recognition with OCR Function*



* OPTIONAL

Giving Shape to Ideas

Roger Kay

Solutions Consultant
rogerkay@gandamar-mm.com
Direct Tel: +95 9510 7558



Thida

Key / Japanese Account Executive
thida@gandamar-mm.com
Direct Tel: +95 9765 23441



Authorized Distributor:

GANDAMAR

O.A. & Business Solutions (Since 1951)

YANGON - No. 18-24, Kun Gyan Road, Aung San Stadium Bldg (S). Ph : 01- 383932, 383934

NAYPYITAW - No.166, Thiri Yadanar Shopping Complex. Ph : 067- 421212

MANDALAY - i plaza - Manmyanmar Plaza 2nd Floor, 84th Road, Ph : 02- 4000098, 4000099

Email: marketing@gandamar-mm.com , hq@gandamar-mm.com

www.facebook.com/ gandamar.mm

ANA Flies You to TOKYO DIRECT EVERYDAY!

TRAVEL FROM ASIA EXCEPT JAPAN

**ECONOMY CLASS
ADDITIONAL FREE BAGGAGE
ALLOWANCE CAMPAIGN**

STANDARD FREE BAGGAGE ALLOWANCE

ONE EXTRA FREE BAGGAGE ALLOWANCE

※ Ticketing from September 1, 2014 to March 31, 2015. Please contact for the detail information.

To let you rest after departure from Yangon, we have changed ANA flight NH914 meal service to Breakfast prior to arrival.

Yangon

Narita

Winter 2014/2015 timetable, Since October 26th

Winter schedule (26th October 2014 - 28th March 2015)

Departure	Flight No.	Arrival	Departure	Flight No.	Arrival		
Yangon	22:10	NH914	6:45+1 Tokyo (Narita)	11:45	NH913	17:15	Yangon

※ Schedule and aircraft may be changed without notice.

For more information ANA Yangon branch or your local travel agent: (Tel 01-255-412 / 13)

Please call ANA Yangon office (Tel:01-255-412/13) we are waiting for you at SAKURA TOWER office or our travel bureau near your place.

Office Hours : 9:00-17:00 / Closed on Saturday • Sunday • Public Holidays

ANA Homepage <http://www.ana.co.jp/>



Inspiration of JAPAN

A STAR ALLIANCE MEMBER

